


Panasonic Manufacturing Malaysia Bhd.

Panasonic Group Site Report 2009
FY2009 :April 1, 2008 - March 31, 2009

Address	Lot 3 Jalan Sesiku 15/2, Shah Alam Industrial Site, Selangor, Darul Ehsan, Malaysia			
Lot area	131087m ²	Total floor area	56559m ²	
Establishment day	1967/5	Employees	965persons	
ISO14001certification date	1996/12	ISO14001renewed	2008/10	
Major Products	Fan, Vacuum Cleaner, Home Shower, Electric Iron, Rice Cooker			
Environmental CommunicationFY2009	Information disclosure			
Items	visitors on factory tours	310persons	collaboration with municipality	300items
Contact	Richard Lai		TEL:	603 5891 5326

Message from Compliance Administrator

In line with the Panasonic 300k tonnes CO2 reduction, PMMA put in a full time staff to manage energy usage and reduction; and managed to reduce 7% energy. PMMA installed Energy saver to all Plastic Injection Machines, Air Compressors, Press machines and High Frequency lighting. Upon those energy installation, PMMA also further installed Transparent Roof sheet to replace using High Bay light in the morning, also installed natural air turbines to extract heat(switch off electrical exhaust fan).As for Plastic Injection amchine, we have revised to cycle time too.



Compliance Administrators

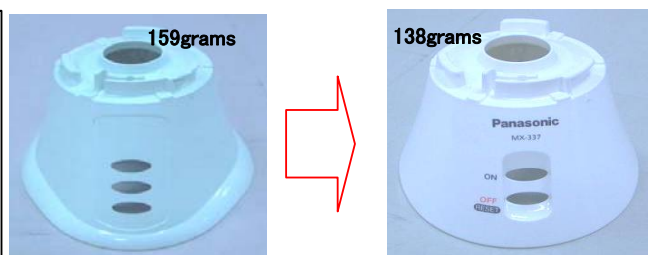
Richard Lai

Main activities in FY2009

Target	Result
Energy saving	save 7% energy by installing energy saver and other natural mean of reducing energy.
Logistic management.	save 350 tonnes CO2; Purchasing had visualized the consolidation of Overseas and local transporter handler by setting
Consolidate Offices	PMMA had gather all offices into one office; with this one office, we reduce the usage of many office equipments, like sharing fax,

Products of Environmentally-conscious information

Blender MX-337



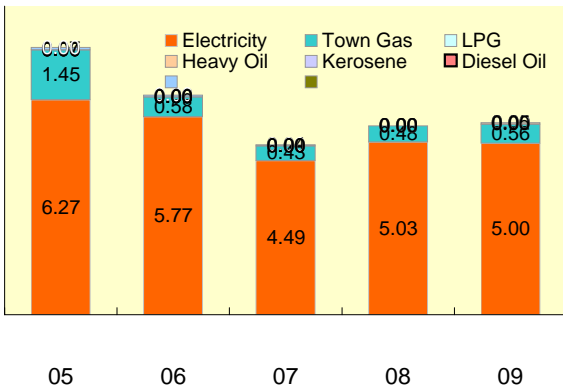
The later model has a lighter body, the difference is 21grams(about 15%). Saving material in new model design part of the engineer design related to products assessment.It will always be carried out by our Engineers

Environmental performance data

Year displayed in graph ex) 2009: April 1, 2008 - March 31, 2009

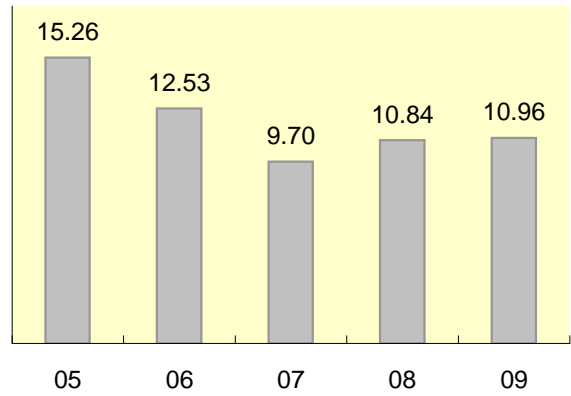
Energy

Unit: 1000kl



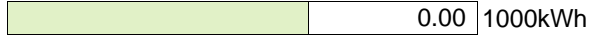
CO2 Emission

Unit: 1000t-CO2



Natural Energy

FY2009

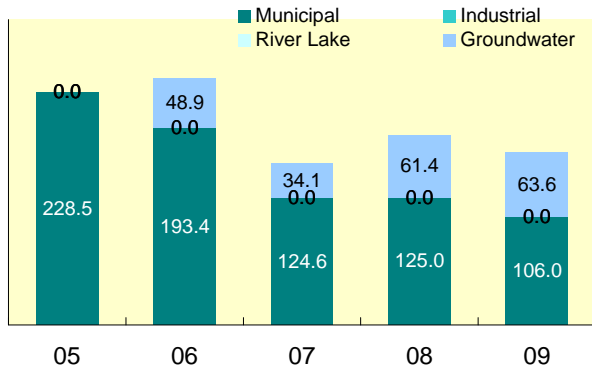


Calculation standards

Numerical values for respective countries listed on the Calculation Tools in GHG Protocol website by World Business Council for Sustainable Development (WBCSD) and World Resource Institute (WRI). Levels for 2002 (Electricity-Heat Steam Purchase_tool1.0_final) has been used for all years.

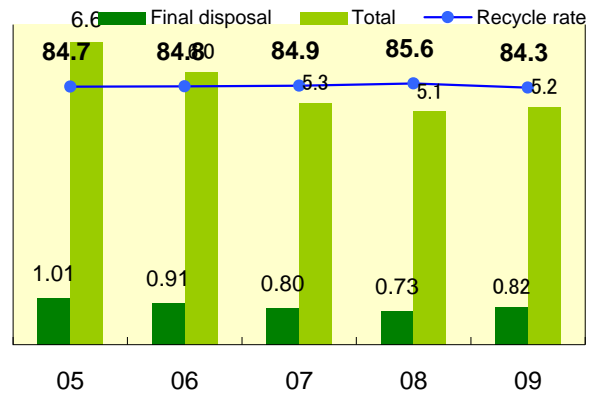
Water

Unit: 1000m³



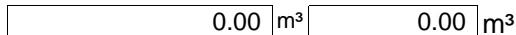
Waste

Unit: 1000t, %



Circulated water

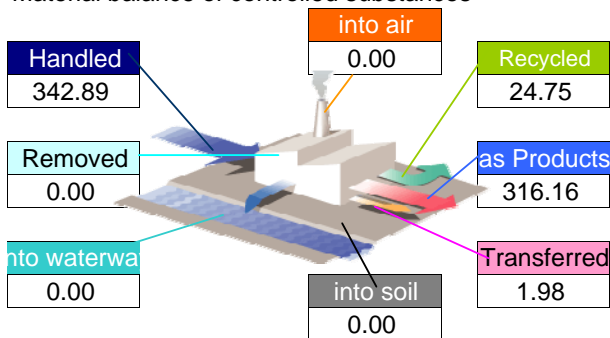
Rain-water FY2009



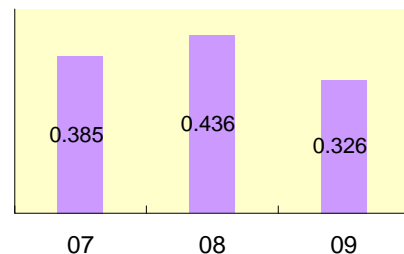
Chemical substances

09

Material balance of controlled substances FY2009



Key target reduction substances



About The Panasonic Group's Chemical Substances Management in Factories
http://panasonic.net/eco/factory/chemical_substance/

About the above data

Compliance

FY2009

<Air pollutant measurement results>

	Unit	Facility name	Legal limit	Voluntary limit	Average measured	Maximum measured	Measuring frequency
SOx	Nm ³ /h	N/A			0.00		
					0.00		
					0.00		
NOx	ppm	N/A			0.00		
					0.00		
					0.00		
Particulate	g/Nm ³	Die Cast	4.00	3.60	0.00	1.5e-002	2
		Buffing Dust	4.00	3.60	0.00	2.8e-003	2
		Boiler	4.00	3.60	0.00	1.5e-003	1

<Water pollutant measurement results>

	Unit	Facility name	Legal limit	Voluntary limit	Average measured	Maximum measured	Measuring frequency
COD	mg/l	SA1 Waste Water pl	100.00	100.00	18.75	43.00	12
		SA2 Waste Water P	100.00	100.00	40.90	66.00	12
					0.00		
BOD	mg/l	SA1 Waste Water pl	50.00	50.00	3.08	9.00	12
		SA2 Waste Water P	50.00	50.00	7.30	13.00	12
					0.00		
Nitrogen	mg/l	N/A			0.00		
					0.00		
					0.00		
Phosphorus	mg/l	N/A			0.00		
					0.00		
					0.00		

<Noise and vibration>

	Unit	Measurement Area	Legal limit	Voluntary limit	Average measured	Maximum measured	Measuring frequency
Noise	dB	DT 22 boundary are	65.00		0.00	77.10	1
		NT 22 boundary are	55.00		0.00	74.00	1
Vibration	dB	DT N/A			0.00		
		NT N/A			0.00		

*Legal limit: The strictest value out of those specified by laws, ordinances or agreements.

*N/A(not applicable):The meaning when the facility is exempted from the regulation.

About excess of legal limit value

--

Improvement of direction by government, or point outs by neighbor

Occurrence situation	Countermeasure

Environmental Policy

THE ENVIRONMENTAL POLICY

1. Implement environmental management system, conform to ISO 14001, with continual improvement.
2. Comply to environmental legislation and related requirement.
3. Prevent pollution, with environmental management to :
 - a) Implement the control of waste emission
 - b) Implement the control of chemical usage
4. Promote energy saving and resource conservation as follow :
 - a) Electricity
 - b) Water
 - c) Product
5. Promote environmental awareness to those people working for or on behalf of the company, with standardization of documents.
6. This environmental policy is available to the public.

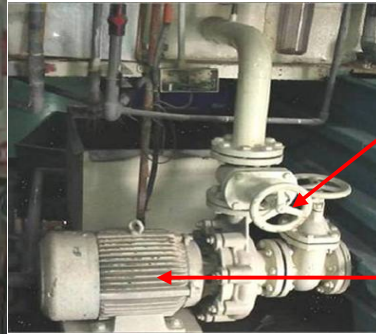
Aiming to reduction of environmental impact



Installation of Speed Controller:

This Inverter is installed to control the frequency of the pump, by doing so, it will lower the Voltage thus supply less power to the pump (therefore saving energy).

This can be done because, the pump was designed in early day, where it was oversize, they run the pump with a control water valve to limit the water output.



Water control valve to limit the water rushing in

Pump run at full speed using maximum power, waste of power because the system does not

Environmental Communication

A total of 9 companies in Panasonic group has collaborated with the town council, Majlis Perbandaran Klang (MPK), in a campaign to keep the cleanliness of Klang town. It was our first collaboration with town council and a total of 500 participants, consisting of Panasonic staff and representatives of Klang Town City Council, have participated in this campaign to maintain the cleanliness of the town.



Giving Klang a clean image

KLANG: It is not something that Klang wants to grow about. For long, the town has been associated with dirtiness.

Now, the Panasonic group of companies aims to clean it up by teaming up with the Klang Municipal Council for the "Indahkan Klang" campaign.

A total of 500 people consisting of representatives from Panasonic Group and the council will take part in the campaign.

They will collect rubbish and maintain cleanliness in five areas: Dataran Seri, Jalan Melaya & Jalan Tamar, Jalan Raja Hassan & Jalan Toling, Jalan Pasar, Pasar Jaya & Emporium, and Makam Plaza.

MPK, Stesen Bas Klang & Jalan Pas Baru and Gold Coast (Jalan Gudang Ne-ne).

Dr B Naidu, chairman of Panasonic group human resource said: "The 'Indahkan Klang' campaign is a good way for us to encourage our staff and the public to clean up our own township."

Mislan Taglia, president of the Klang Town Council, said: "We hope this will be a good example for other companies to emulate besides concentrating on their business operations."

"This campaign is a gesture of goodwill to commemorate our partnership."

Emergency preparedness and response



Disposal of old machine, spillage will normally happened when loading the machine onto the truck.

So here is the practice of transferring the oil into a proper container before disposal the machine.

Sawdust were scatter around the machine to gather those spilled from the machine, the oil-soaked sawdust will later be stored and disposed as toxic waste.