

We recycle four types of end of life home appliances appropriately!

Don't use **unauthorized** collection agents when disposing of end-of-life home appliances!

Legally commissioned and approved agents will dispose of home appliances properly.

When throwing away home appliances as waste, don't ever give items to collection agents that have not been approved under the waste management act. Make sure you give them to an electronics retailer or talk to the local government.

Don't use these kind of unauthorized agents:



Collecting by car...



Collecting in open spaces...



Distributing flyers...



Using these kind of dealers could lead to the following problems!



Illegal dumping by illegal collection services!



Improper disposal of CFC gases!

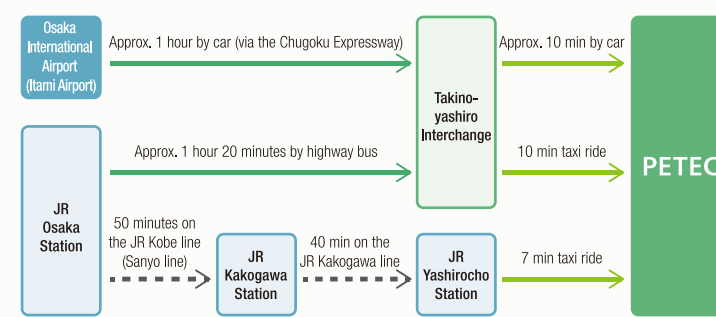
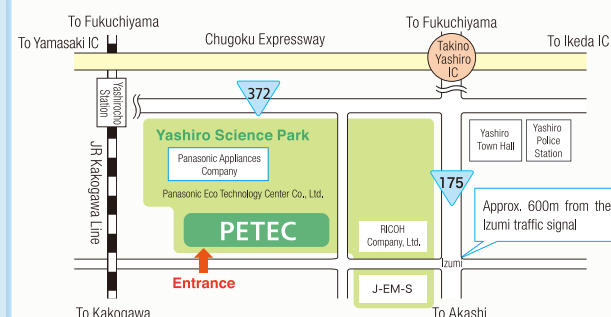


Fires due to mismanagement!



Help us recycle
TVs, refrigerators and freezers, washing machines and dryers, air conditioners
in accordance with the "Home Appliance Recycling Law!"

Access to PETEC



Plant Tours (Please book in advance)

Tour days	Tuesday-Friday* (two tours per day) * Excluding public holidays	Number of Visitors	1 to 60 School visits discussed as required
Tour hours	(1) 10:00 a.m. - 11:30 a.m. (2) 1:30 p.m. - 3:00 p.m.	Applications	Please apply through our website

Panasonic Eco Technology Center Co., Ltd.

50 Saho, Kato City, Hyogo Prefecture 673-1447
TEL: 0795-42-8570 FAX: 0795-42-8580

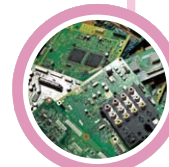
Website <https://panasonic.co.jp/eco/petec/>

Panasonic

The Hands-on Recycling-Oriented Plant
Where You can Watch, Listen, Touch and Learn

PETEC

Panasonic Eco Technology Center



Panasonic Eco Technology Center Co., Ltd. (PETEC)

Product to product - Introducing Panasonic Eco Technology Center's "Treasure Hunting"



PETEC mascot character

Passing precious resources on to the future through recycling-oriented manufacturing

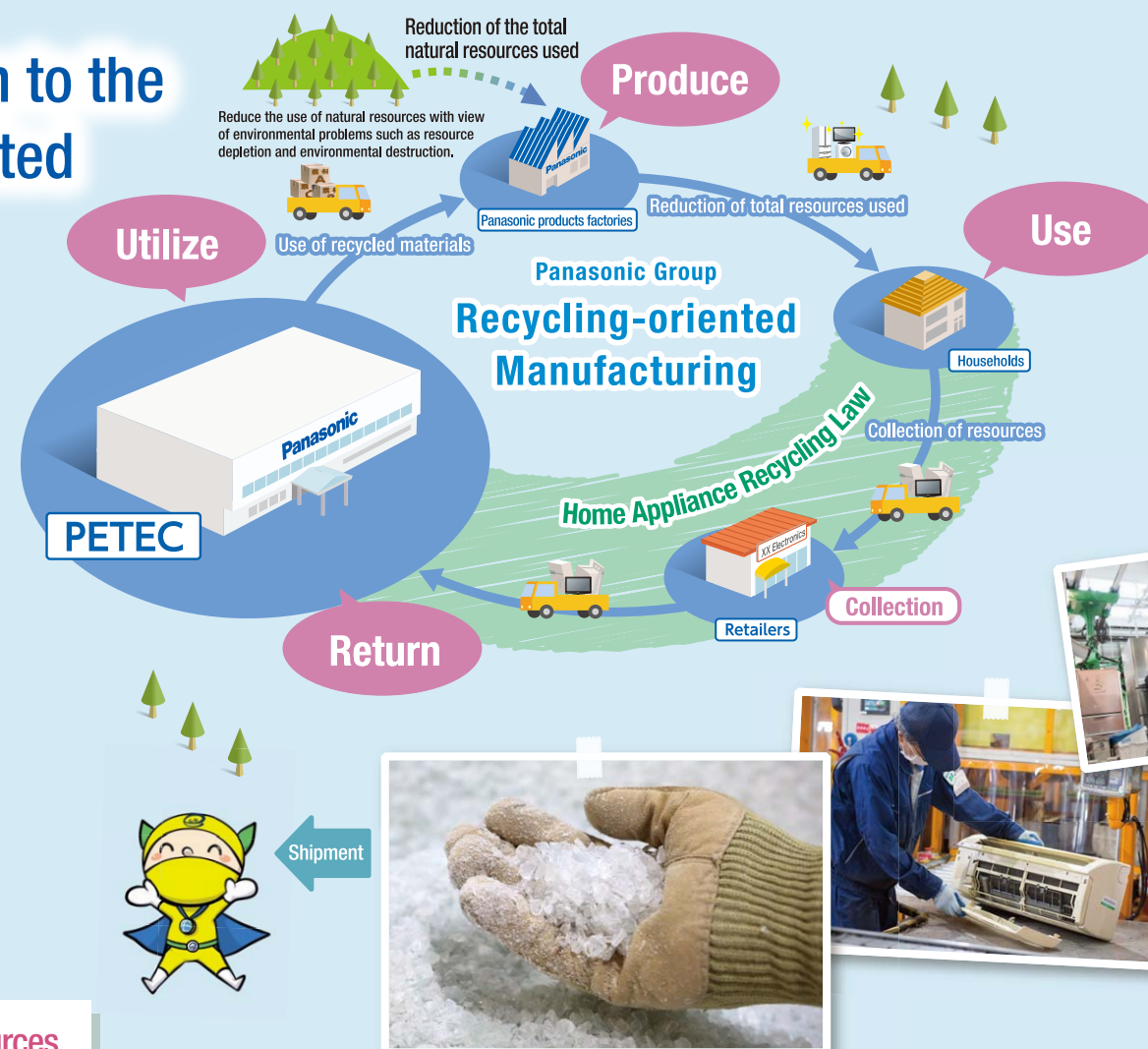
"Maybe I should buy some new appliances..."
"I'd really like to get rid of these old appliances..."

In time, all home appliances will have served their purpose.
When that time comes, what happens to appliances that are no longer needed?

Used appliances are still full of useful resources.
So, in keeping with the "Mottainai Spirit", we recycle them to keep their resources from going to waste.
By recycling these precious resources "from products to products", we are working to reduce waste.

Facility Overview

Capital: JPY 400 million
Opening of business: April 1, 2001
Site area: 38,570m²
Number of end-of-life home appliances recycled: Approximately 900,000 per year
Types of products accepted for recycling: flat screen TVs, washing machines and dryers, air conditioners, refrigerators and freezers (4 types, 6 appliances)



Reception



Shipment

Walking with the local community

Those of us at PETEC walk with our local community through regular discussion with the members of the local community (Environmental Conservation Council), reflecting the opinions of locals that come out at these meetings in our operations, collaboration with those with disabilities, and providing opportunities for the children who will be responsible for the next generation to tour our factories.



Environmental Conservation Council

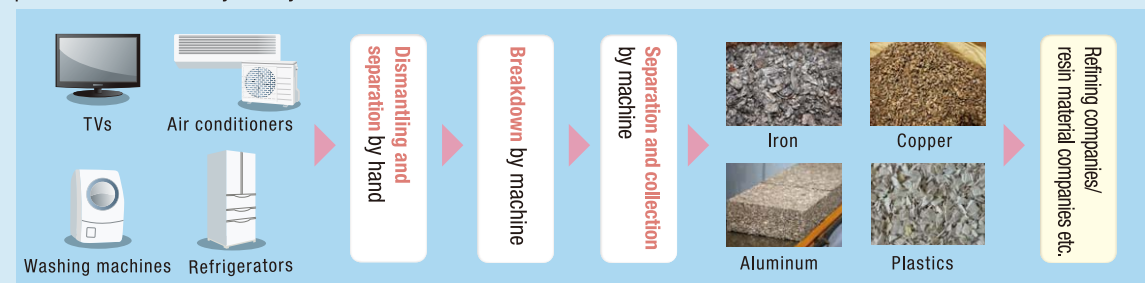


Opening our facilities to people of all ages and nationalities

Using new recycling technology to collect more resources

PETEC's Home Appliance Recycling

Products with different manufacturers, models and composition are first dismantled by human hand. Hazardous substances such as CFC gases and mercury are also disposed of appropriately. Then, following breakdown by machine and automatic separation, the products return to society as recycled resources.



Development of recycling technologies

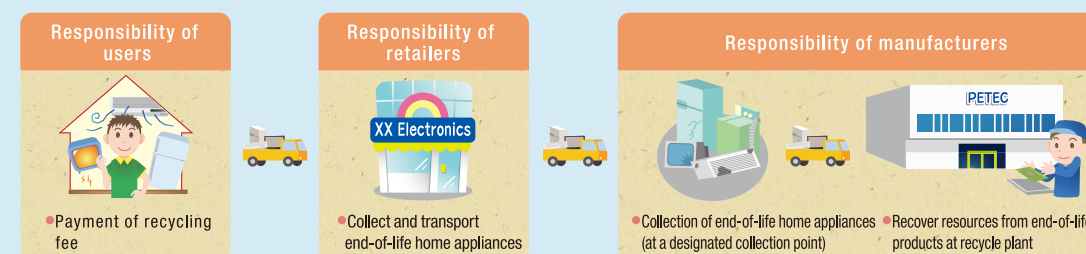


Development of technology that simultaneously separates three types of plastic
We developed a system that simultaneously separates and collects PP, PS, and ABS (types of plastic) at over 99% purity using infrared light.
The development of this technology has contributed to an increase in the speed of recycled plastic (resin) reuse.

[Examples of previous technology developed]
Neodymium magnet collection device, CRT laser splitting device

Let's keep the law! The Home Appliance Recycling Law is the first step towards resource recycling

The Home Appliance Recycling Law (the Recycling of Specified Kinds of Home Appliances Act) is the legal act that enforced a system in which consumers (disposers), retailers, and home appliance manufacturers all fulfil a different role in the recycling and effective use of end-of-life home appliances as resources. It also contributes to conservation of the global environment through enforcing appropriate disposal of hazardous substances.



Why does it cost money to recycle household appliances?

The fee paid when handing over end-of-life home appliances is used as the expense required for recycling.



* Collection and transportation fees for retailers are made public by means of in-store notice boards and other similar means.
* Recycling fees for manufacturers are published on the Home Appliance Recycling Center (RKC) website (URL: <https://www.rkc.aeha.or.jp>). (only in Japanese)

Make sure to receive your copy of the Recycling Ticket

The following recycling ticket is issued when you pay the fee. You can check whether or not the appliance you disposed of has been received by a designated collection point by entering the "control manifest contact number" from your copy of the recycling ticket into the website below.

Home Appliance Recycling Ticket Center (RKC)
https://rkc-bu-in3.rkc.aeha.or.jp/plsql/rkc_web/p_kt330080
(only in Japanese)



Home Appliance Recycling Ticket (for fees paid at retailers)

Home Appliance Recycling Ticket (for fees paid through postal transfer)