

### Panasonic Solution Developer Network

Panasonic is offering a PBX partner program (Panasonic Solution Developer Network for Communication Products) to offer integration between Panasonic PBX and 3rd party vendor applications. For the software vendors registered in the program, Panasonic provides the latest technical specification and support to our partners interoperability testing. The 3rd party vendor successfully tested the software product stated in this solution leaflet, in accordance with the 'self-test' specification provided by Panasonic.



## Hospitality Solution

### ► Type of Business and Merit

- Type of Business: Hospitality, Healthcare, Hotels, Clinics, Others (Business Centers, Residential care homes, Resorts and companies that requires a billing solution to be integrated with 3rd party applications (PMS = Property Management System) and sending commands to the PBX)
- Merit: PMS integration with Call Accounting (invoicing calls) sending commands to the PBX.

### ► Application Name - Partner

cHar PMS Link - cHar, Desarrollo de Sistemas SL

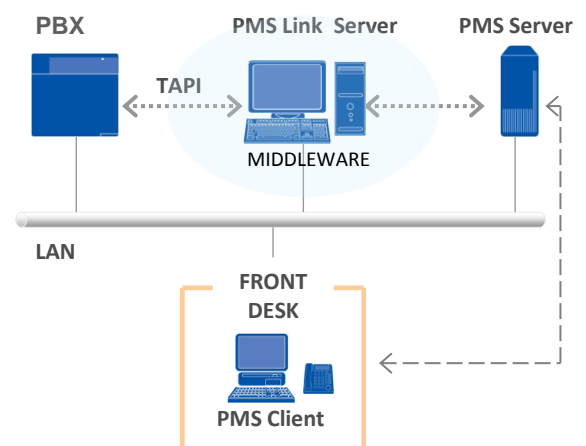
### ► Overview

- Accounting and Billing solution for calls and charges fees to be integrated with the existent PMS Solution.
- Supports hospitality actions such as Check In / Check Out / Room Status / Reminders / Minibar / etc.
- Call prices and increments defined by the user for revenue purposes.

### ► Main Feature

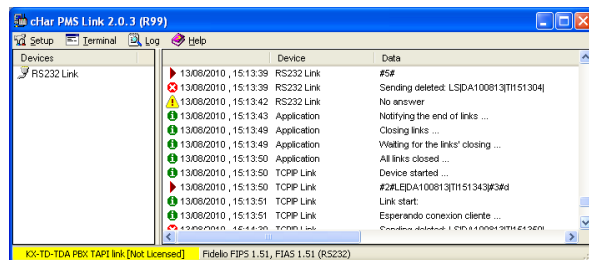
- Developed to be used as a **middleware** between the PBX and the PMS (it's not a standalone solution)
- Accounting and Billing solution with a flexible call price configuration to report to the PMS the calls made by guests.
- Direct integration with the Hotel PMS installed.
- Multi-instance TSP supported to manage several PBX at the same time.
- Supports all hospitality functions to be sent to the PBX by the PMS and viceversa (Check In, Check Out, Minibar, Room Status, Reminders, ...).

### ► System Configuration

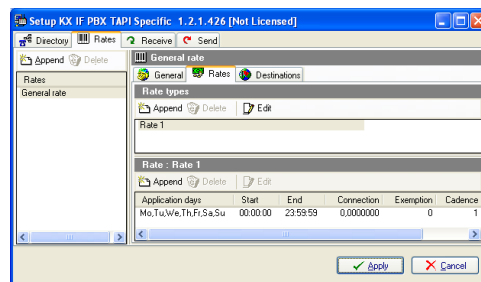


## ▶ Features

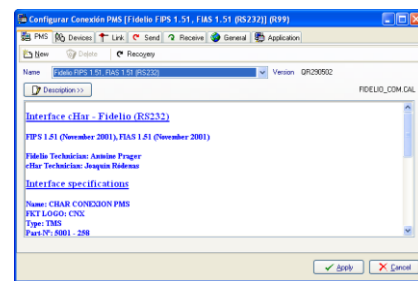
- Invoice calls made by the guest
- Works as a middleware between the PBX and the PMS.
- Integration with PMS
- Easy call prices configuration
- Room Status and Language translation between PMS and PBX configuration
- Advanced call accounting features (incoming not answered calls, internal calls, call answer time, ...).
- Supports multiple methods of advanced call charge calculation (increments, fix value, minimum cost, ...).
- Comprehensive control of reminders (done, not answered, statics of each reminder, ...)
- Supports the control of extensions used as Phone-Booths (call-ticket printed after each call for instant billing)
- Multi-instance TSP supported to manage several PBX from an unique application.
- Languages: Spanish, English



Main Screen



Rates configuration



PMS integration

## ▶ System Requirements

### PBX

Supported PBX	Panasonic KX-TDA 15/30/100/200/600, KX-TDE100/200/600, KX-NCP500/1000, KX-NS1000
Connection	LAN / USB

### Partner Application

OS	Microsoft® Windows Vista® Microsoft® Windows® 2000 Pro / 2000 Server Microsoft® Windows® 2003 Server / 2008 Server Microsoft® Windows® 7 / XP Pro (Allows 32 & 64 bits environments)
CPU	Pentium® 4 2GHz (or higher)
RAM	1 GB (or higher)
HDD	2 GB (minimum)

## ▶ Application Partner Information



Panasonic  
Solution  
Developer  
Network

**Silver  
Partner**

**Company Name:** cHar, Desarrollo de sistemas SL

**Address:** Pablo Iglesias 56, 1-1 (08302) Mataró – Barcelona – Spain.

**Web:** <http://www.char.es>

**E-mail:** [comercial@char.es](mailto:comercial@char.es)

The above solution is based on written or verbal information received by Panasonic System Networks Co., Ltd. ("Company") from Panasonic Solution Developer Network for Communication Products member companies and may not have been independently verified by Company. Company DISCLAIMS ANY AND ALL PROMISES, REPRESENTATIONS, AND WARRANTIES, EXCEPT AS EXPRESSLY SET FORTH IN THIS DOCUMENT, WITH RESPECT TO INFORMATION FURNISHED TO YOU BY THIS DOCUMENT, INCLUDING THEIR CONDITION; CONFORMITY TO ANY REPRESENTATION OR DESCRIPTION; THE EXISTENCE OF ANY LATENT OR PATENT DEFECTS; AND TITLE, MERCHANTABILITY, OR FITNESS FOR A PARTICULAR PURPOSE OR USE. Prior specifying any these solutions for a particular application, you should verify the actual functionality of such solution. If you want information about above solution, please contact the above address. Design and specifications are subject to change without notice. The images shown of base unit display and lams are composite images. Microsoft and Windows are either registered trademarks or trademarks of Microsoft Corporation in the United States and/or other countries. Intel and Pentium are trademarks or registered trademarks of Intel Corporation or its subsidiaries in the United States and other countries. Other trademarks and trade names are those of their respective owners.