

Panasonic Solution Developer Network

Panasonic is offering a PBX partner program (Panasonic Solution Developer Network for Communication Products) to offer integration between Panasonic PBX and 3rd party vendor applications. For the software vendors registered in the program, Panasonic provides the latest technical specification and support to our partners interoperability testing. The 3rd party vendor successfully tested the software product stated in this solution leaflet, in accordance with the 'self-test' specification provided by Panasonic.



Panasonic CA Pro Integration Solution

► *Type of Business and Merit*

- Type of Business : Financial Services, Telephone Services, Distribution, Transportation, Manufacturing, Government, Publishing, Healthcare, Utilities, Insurance, Education, Services
- Merit : Inbound, Inquiry, Order entry, Information, Support, Emergency, Reservations, Appointments, Billing, Service, Information, Outbound, Collections

► *Application Name - Partner*

CCView Middleware for CCView - Poltys Inc.

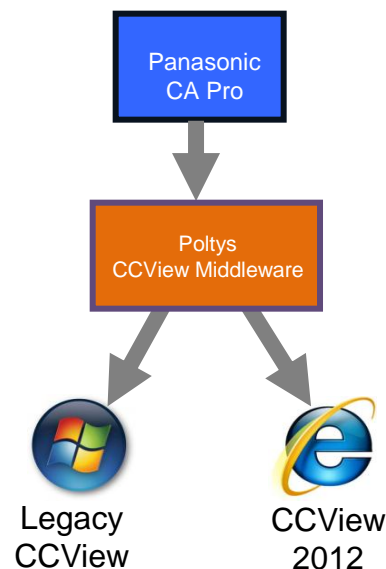
► *Overview*

CCView Middleware allows Panasonic Communications Assistant Pro (CA Pro) executing either legacy CCView or CCView 2012 version by using a middleware wrapper application.

► *Main Features*

- CCView Middleware installation kit registers a special Windows Registry key for Panasonic CA Pro usage
- Panasonic CA Pro finds the registry key on the specific position and it executes CCView Middleware by shell command using the value specified in the Windows Registry key
- CCView Middleware launches either legacy CCView or CCView 2012 supervisor applications

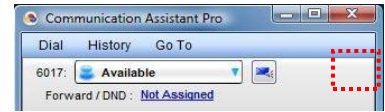
► *System Configuration*



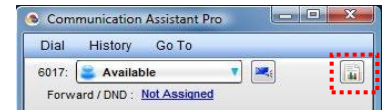
▶ Notes

- Both Panasonic CA Pro and Poltys CCView Middleware applications shall be installed on the same PC.
- Install CCSupervisor application on the same PC having both Panasonic CA Pro and CCView Middleware applications running on in order to use Poltys CCView legacy product.
- No license required

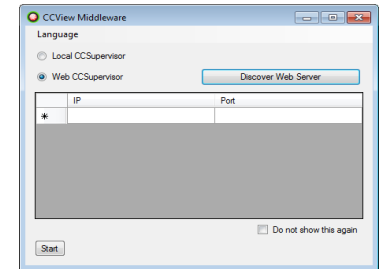
CCView Middleware not installed



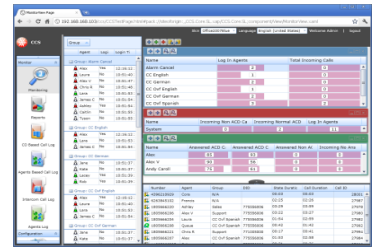
CCView Middleware installed



CCView Middleware



CCView 2012

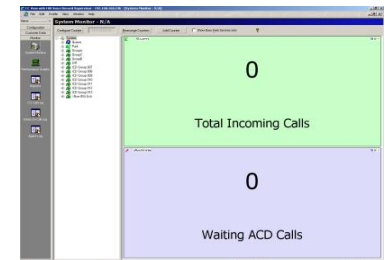


▶ System Requirement

Partner Application

OS	Microsoft® Windows® XP Professional SP3 Microsoft® Windows Vista® Business SP1, SP2 (UAC disabled) Microsoft® Windows® 7 Professional (UAC disabled) Microsoft® Windows® 8, including Pro version (UAC disabled) Microsoft® Windows Server® 2003 SP2 Microsoft® Windows Server® 2008 R2 SP1 (UAC disabled) Microsoft® Windows Server® 2012 (UAC disabled)
CPU	Pentium® 4 2.5 GHz (or higher)
RAM	1 GB (or higher)
HDD	10 GB Minimum (installation)

Legacy CCView



▶ Application Partner Information



Company Name: Poltys Inc.

Address: 3300 N. Main Street , Suite D Anderson, SC 29621-4128, USA

Web: <http://www.poltys.com/>

E-mail: sales@polty.com

Panasonic
Solution
Developer
Network

**Gold
Partner**

The above solution is based on written or verbal information received by Panasonic System Networks Co., Ltd. ("Company") from Panasonic Solution Developer Network for Communication Products member companies and may not have been independently verified by Company. Company DISCLAIMS ANY AND ALL PROMISES, REPRESENTATIONS, AND WARRANTIES, EXCEPT AS EXPRESSLY SET FORTH IN THIS DOCUMENT, WITH RESPECT TO INFORMATION FURNISHED TO YOU BY THIS DOCUMENT, INCLUDING THEIR CONDITION; CONFORMITY TO ANY REPRESENTATION OR DESCRIPTION; THE EXISTENCE OF ANY LATENT OR PATENT DEFECTS; AND TITLE, MERCHANTABILITY, OR FITNESS FOR A PARTICULAR PURPOSE OR USE. Prior specifying any these solutions for a particular application, you should verify the actual functionality of such solution. If you want information about above solution, please contact the above address. Design and specifications are subject to change without notice. The images shown of base unit display and lams are composite images. Microsoft and Windows are either registered trademarks or trademarks of Microsoft Corporation in the United States and/or other countries. Intel and Pentium are trademarks or registered trademarks of Intel Corporation or its subsidiaries in the United States and other countries. Other trademarks and trade names are those of their respective owners.

