

Panasonic Solution Developer Network

Panasonic is offering a PBX partner program (Panasonic Solution Developer Network for Communication Products) to offer integration between Panasonic PBX and 3rd party vendor applications. For the software vendors registered in the program, Panasonic provides the latest technical specification and support to our partners interoperability testing. The 3rd party vendor successfully tested the software product stated in this solution leaflet, in accordance with the 'self-test' specification provided by Panasonic.



Call Accounting Solution

► Type of Business and Merit

Hospitality: Follow up on customer charges
Lawyers and Accounting: Billing back clients

► Application Name - Partner

TABS.IT - MER Telemanagement Solutions Ltd.

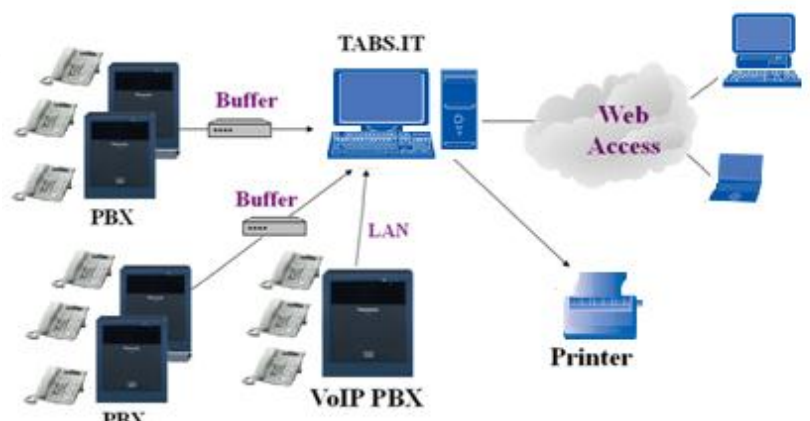
► Overview

MTS TABS.IT is a cost-effective, robust and feature-rich call accounting system, produced by MTS. The MTS TABS.IT call accounting system runs on any Windows PC and allows the tracking and control of calls in and out of the organization. It does this automatically through a connection to any company PBX. The data collected can instantly be reproduced in the form of statistical reports and graphs.

► Main Feature

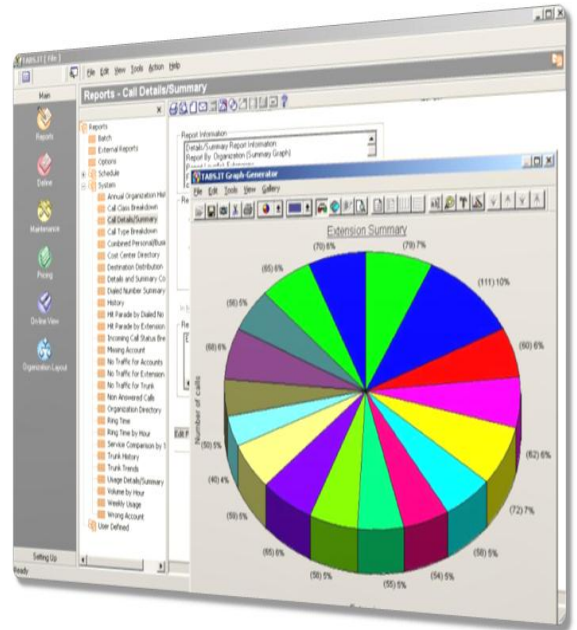
- User friendly and high quality
- Excellent performance – minimum wait time to produce reports
- Multi-switch, multi-location, and currency
- Multi Language: English German, French, Spanish, Italian, Dutch, Polish, Portuguese and Hebrew.
- Support of account codes and cost centers

► System Configuration



► Features

- Powerful and flexible control over pricing
- Organizational hierarchy levels
- Advanced security features including masking, double password and authorization control
- Built-in reports suitable for most companies
- Sophisticated report generator able to produce almost any custom report
- Browser-based interface for on-demand inquiring and reporting, anywhere
- Advance graphical presentation of usage statistics and summaries
- Available add-ons
 - Module locking extensions, preventing outgoing calls
 - Module for hotel room billing and credit



► System Requirement

PBX

| | |
|---------------|--|
| Supported PBX | Panasonic KX-TDA100/200/600, KX-TDE100/200/600, KX-NCP500/1000 |
| Connection | LAN |

Partner Application

| | |
|-----|-----------------------------------|
| OS | Microsoft® Windows® 2008 Server |
| CPU | Xeon® / Pentium® 2GHz (or higher) |
| RAM | 2 GB (or higher) |
| HDD | 80 GB Minimum (installation) |

► Application Partner Information



Panasonic Solution Developer Network
Gold Partner

Company Name: MTS Asia Ltd.

Address: Room 607, Yen Sheng Centre, 64 Hoi Yuen Road, Kwun Tong, Kowloon, HK.

Web: <http://www.mtsasia.com>

E-mail: info@mtsasia.com

The above solution is based on written or verbal information received by Panasonic System Networks Co., Ltd. ("Company") from Panasonic Solution Developer Network for Communication Products member companies and may not have been independently verified by Company. Company DISCLAIMS ANY AND ALL PROMISES, REPRESENTATIONS, AND WARRANTIES, EXCEPT AS EXPRESSLY SET FORTH IN THIS DOCUMENT, WITH RESPECT TO INFORMATION FURNISHED TO YOU BY THIS DOCUMENT, INCLUDING THEIR CONDITION; CONFORMITY TO ANY REPRESENTATION OR DESCRIPTION; THE EXISTENCE OF ANY LATENT OR PATENT DEFECTS; AND TITLE, MERCHANTABILITY, OR FITNESS FOR A PARTICULAR PURPOSE OR USE. Prior to specifying any these solutions for a particular application, you should verify the actual functionality of such solution. If you want information about above solution, please contact the above address. Design and specifications are subject to change without notice. The images shown of base unit display and lams are composite images. Microsoft and Windows are either registered trademarks or trademarks of Microsoft Corporation in the United States and/or other countries. Intel and Pentium are trademarks or registered trademarks of Intel Corporation or its subsidiaries in the United States and other countries. Other trademarks and trade names are those of their respective owners.

