

◆ Automatic Image Orientation

<Function>

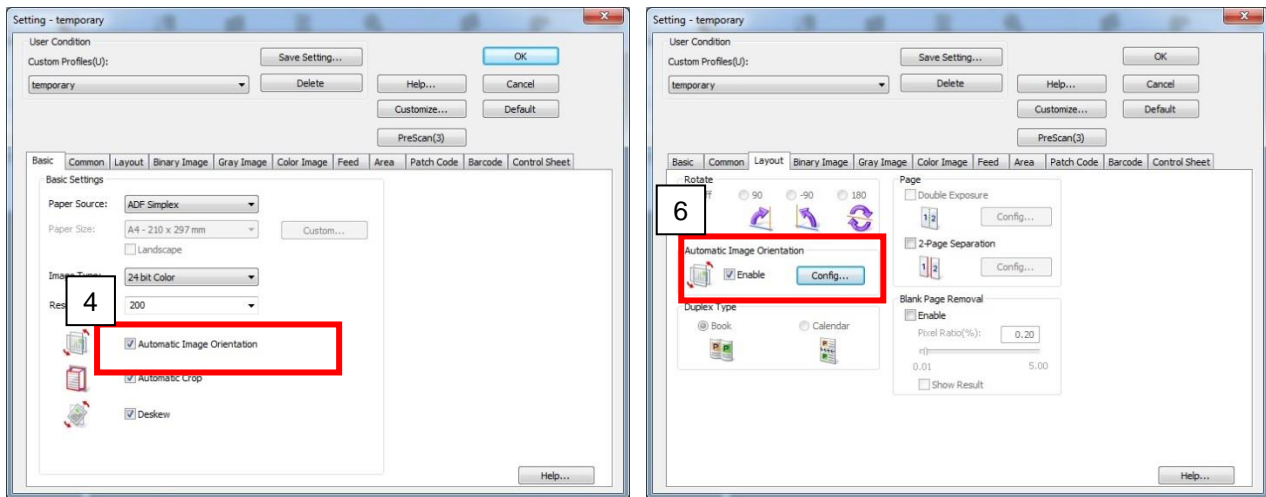
This feature detects the orientation of characters in the document and rotates the scanned image to the correct orientation in 90° increment.



【Demo Document】



<ICP Setting Procedures>

Refer to



1. Click "Scan"  at the left side. The "New Document – Scan" dialog box is displayed.
2. Click "Scan Setting" .
3. Select "24 bit Color" in "Image Type".
4. Check "Automatic Image Orientation".
5. Select "Layout" tab.
6. Click "Config" in "Automatic Image Orientation" and confirm the target language, then click "OK".
7. Click "OK".
8. Click the "Start" button to begin scanning.

<Notes>

- Even if the documents are the same, they may not be correctly oriented in the same direction because of the skew when they were scanned.
- Because characters in the image are used for correcting the orientation, the orientation of documents such as the following may not be correctly oriented:
 - Documents with few characters
 - Documents with many characters that have text effects such as outlines, drop shadows, or underlines
 - Documents with many characters that are extremely bright, dark, large, small, etc
 - Documents with many photos and graphics and with few characters

- Documents with patterned backgrounds behind characters
- Documents with handwritten characters
- Documents with characters arranged in different directions, such as in drawings
- Documents with tables where ruled lines and characters are close
- This function cannot be used at the same time as Rotate, and Duplex Type, Scanning Area, Sub Area, or Automatic Separation.
- If you also use 2-Page Separation in addition to Automatic Image Orientation, first use the automatic image orientation function, and then use the page separation function.
- Because characters in the image are used for correcting the orientation, the scanning speed may decrease.