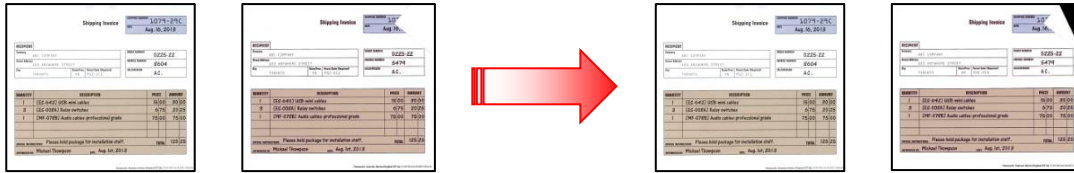


## ◆ Detect Dog-ear

<Function>

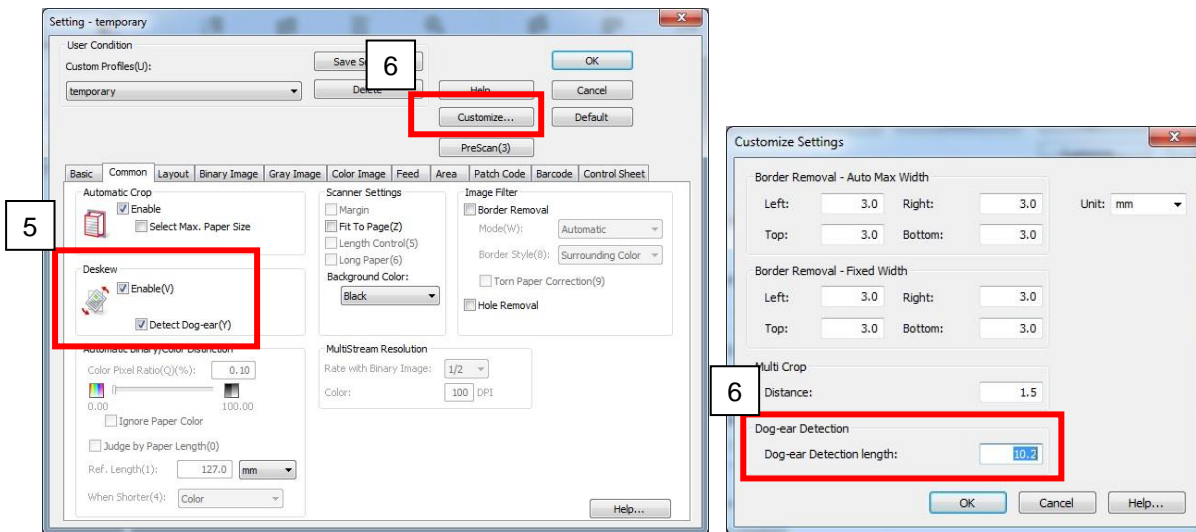
This function detects dog-ears in a scanned document.



【Demo Document】 【Demo Document with a Dog-ear】



<ICP Setting Procedures>

Refer to



1. Click "Scan"  at the left side. The "New Document – Scan" dialog box is displayed.
2. Click "Scan Setting" .
3. Select "24 bit Color" in "Image Type".
4. Select "Common" tab.
5. Check "Detect Dog-ear" in "Deskew".
6. Click "Customize Setting" and confirm the "Dog-ear Detection Length" in "Dog-ear Detection", then Click "OK"
7. Click "OK".
8. Click the "Start" button to begin scanning.
9. The detect dog-ear skip window and preview window will appear, and you can choose whether to continue scanning or to stop scanning.
10. Click "Continue" or press "Stop" button. The image on which the dog-ear was detected is also obtained.

<Notes>

- Dog-ears may not be detected correctly on some documents due to their size.
- Dog-ears may not be detected correctly depending on their size.
- This function cannot be used with some scanners.
- The Detect Dog-ear function cannot be used with Flatbed.
- The supported maximum paper length differs according to the resolution, model, etc.
- On the preview window on which dog-eared images are displayed, Duplex Type, 2-Page Separation, and Blank Page Removal cannot be used.
- If the computer does not have enough memory, the preview window will not be displayed.
- Dog-ears may not be detected correctly when scanning mixed batch documents with different sizes.

- Dog-ears will be detected if they exceed the length set in “Dog-ear Detection length” from the corners of the document. “Dog-ear Detection length” can be set in Customize Settings