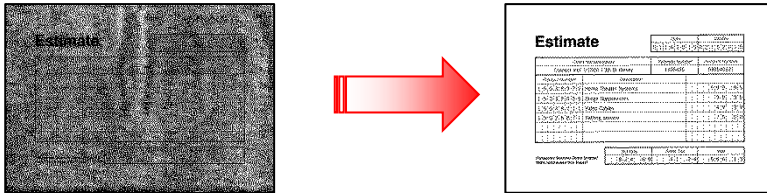


◆ Background Color

<Function>

This function sets the specified background color when scanning from ADF.

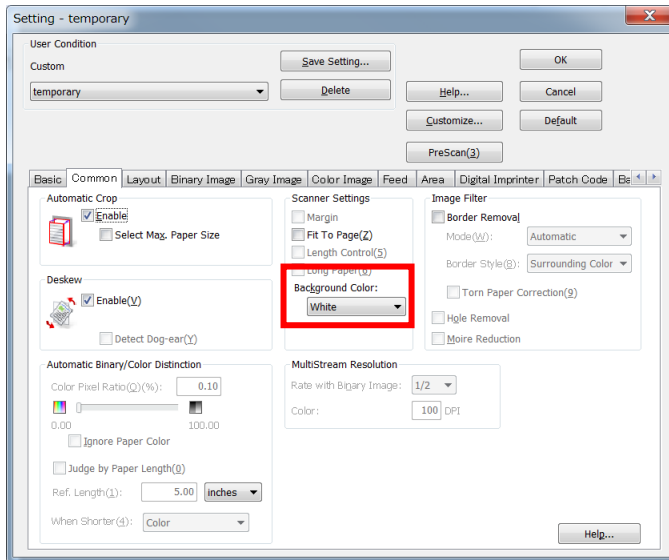
【Demo Document】





* If you scan thin paper with background “Black”, scanned data is darker.

To prevent this phenomenon, set to background “White”.

<ICP Setting Procedures>



1. Click “Scan”  at the left side. The “New Document – Scan” dialog box is displayed.
2. Click “Scan Setting” .
3. Select “Common” tab.
4. Select “White” in “Background Color”.
5. Click “OK”
6. Click the “Start” button to begin scanning.

<Notes>

- Depending on the scanner model, these features cannot be used.
- This function cannot be used when scanning from the flatbed.