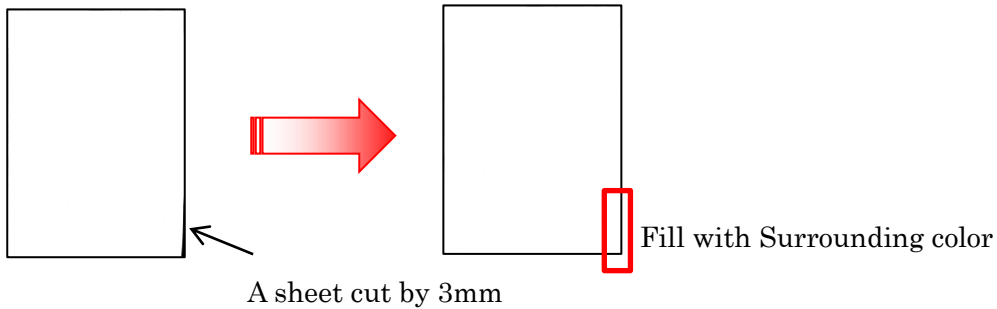


## ◆ [Border Removal](#)

<Function>

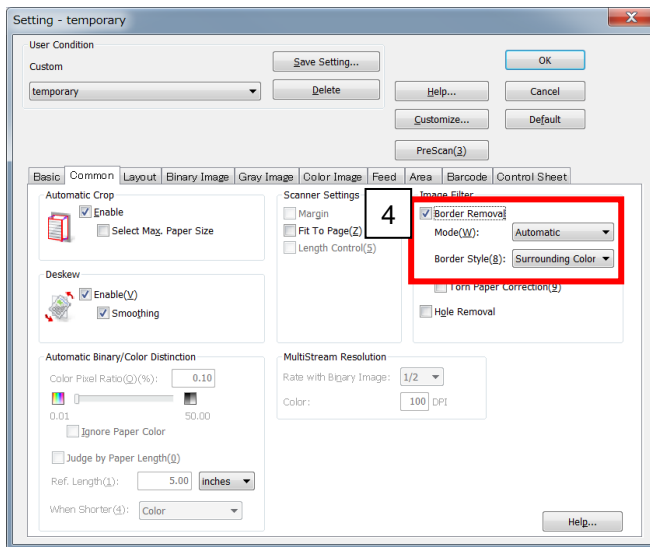
This function removes the black borders, formed during scanning or copying, from around the images.



**【Demo Document】**



<ICP Setting Procedures>

Refer to



1. Click "Scan"  at the left side. The "New Document – Scan" dialog box is displayed.
2. Click "Scan Setting" .
3. Select "Common" tab.
4. Check "Border Removal" in "Image Filter".
5. Click "OK"
6. Click the "Start" button to begin scanning.