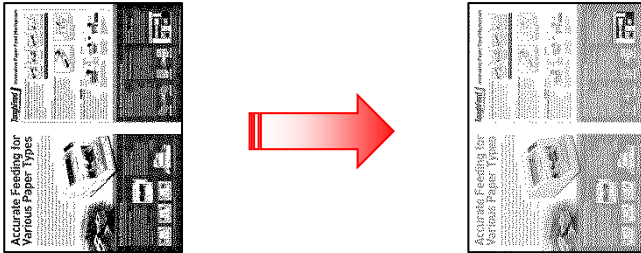


◆ Halftone

<Function>

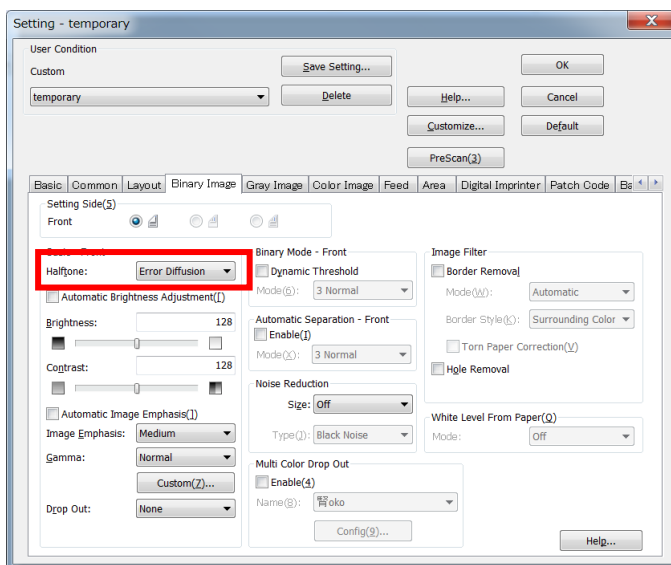
This function is used to reproduce images with halftones such as photos in the Black and White mode.



【Demo Document】



<ICP Setting Procedures>

【Demo Document】



1. Click "Scan"  at the left side. The "New Document – Scan" dialog box is displayed.
2. Click "Scan Setting" .
3. Select "Binary Image" tab.
4. Select "Error Diffusion" in "Halftone".
5. Click "OK"
6. Click the "Start" button to begin scanning.

<Notes>

- The Halftone function cannot be used at the same time as Deskew, Automatic Crop, Dynamic Threshold, or Noise Reduction