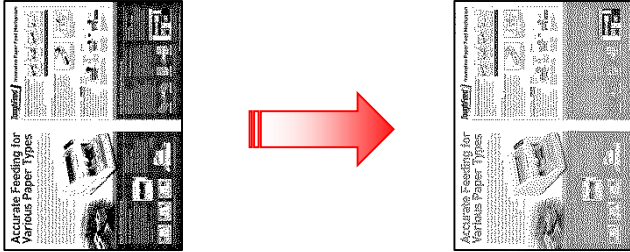


◆ Automatic Separation

<Function>

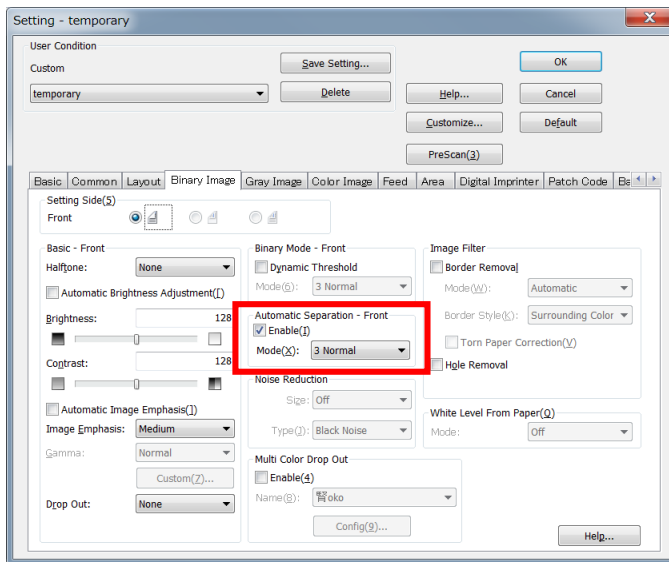
This function enables the scanner to automatically differentiate between text areas and photo areas, and scan them accordingly.



【Demo Document】



<ICP Setting Procedures>

【Demo Document】



1. Click "Scan"  at the left side. The "New Document – Scan" dialog box is displayed.
2. Click "Scan Setting" .
3. Select "Binary Image" tab.
4. Check "Enable" and select proper "Mode" in "Automatic Separation".
5. Click "OK"
6. Click the "Start" button to begin scanning.

<Notes>

- If the None setting has been selected for Halftone, Error Diffusion is selected automatically.
- Depending on the scanner model concerned, the Halftone setting is ignored, and "Error Diffusion" is selected.
- The Automatic Separation function is valid only in the binary mode. It cannot be used at the same time as Noise Reduction, Sub Area, Dynamic Threshold, Automatic Crop, Deskew, Automatic mode, MultiStream mode, or Automatic Image Orientation.
- With some documents, it may not be possible to separate the text and photos completely. To continuously scan documents whose photo areas are invariably positioned in the same places, use the sub area function described in Sub Area for better results.
- The brightness of the text areas can be specified by "Mode". Depending on the scanner model concerned,

“Mode” may not be available. The Dynamic Threshold mode function is valid only in the Black and White mode.