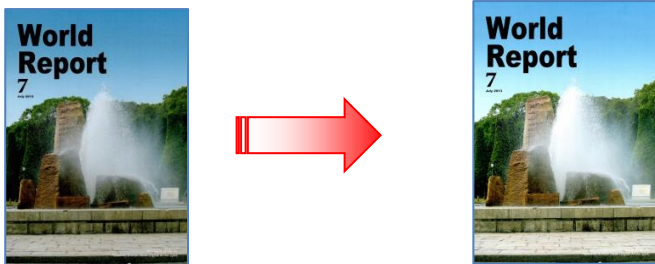


◆ Automatic Brightness Adjustment

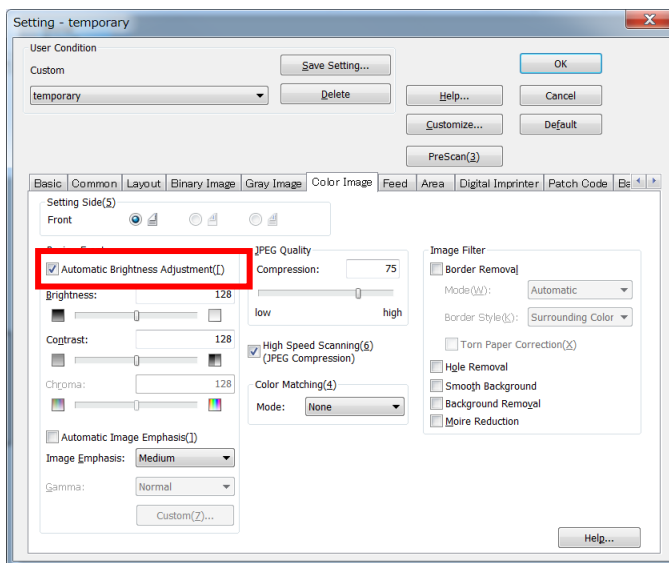
<Function>



This function automatically adjusts the brightness and the contrast of the scanned images.【AP/AR-3】

【Demo Document】



<ICP Setting Procedures>



1. Click "Scan"  at the left side. The "New Document – Scan" dialog box is displayed.
2. Click "Scan Setting" .
3. Select "24 bit Color" in "Image Type".
4. Select "Color Image" tab.
5. Check "Automatic Brightness Adjustment".
6. Click "OK"
7. Click the "Start" button to begin scanning.

<Notes>

- The settings for Automatic Brightness Adjustment are shared between the [Binary Image] tab, [Gray Image] tab, and [Color Image] tab.
- This function cannot be used with some scanners.
- The Automatic Brightness Adjustment function cannot be used with Flatbed.
- The supported maximum paper length differs according to the resolution, model, etc.
- Depending on the images to be scanned, the function may not work satisfactorily.