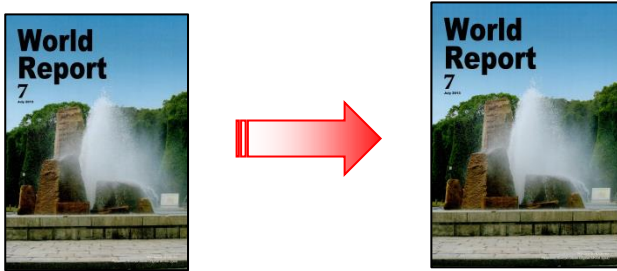


## ◆ Automatic Image Emphasis

<Function>

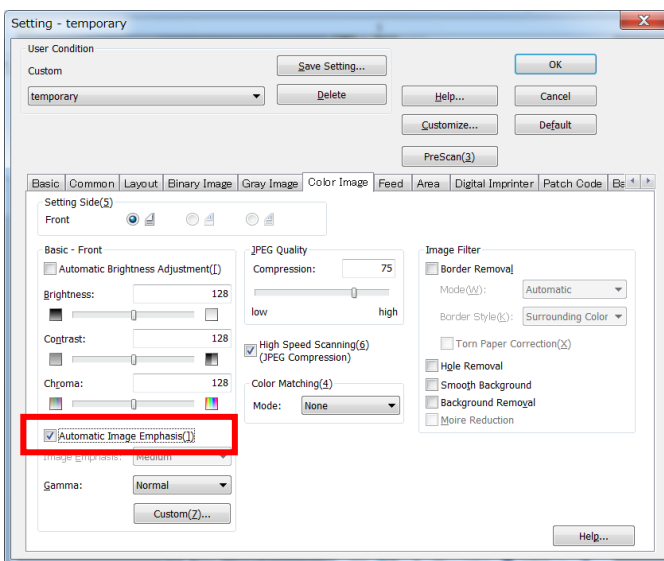
This function automatically adjusts the image quality of the scanned images.



【Demo Document】



Moiré is reduced.

<ICP Setting Procedures>



1. Click "Scan"  at the left side. The "New Document – Scan" dialog box is displayed.
2. Click "Scan Setting" .
3. Select "24 bit Color" in "Image Type".
4. Select "300 dpi" in "Resolution".
5. Select "Color Image" tab.
6. Check "Automatic Image Emphasis".
7. Click "OK".
8. Click the "Start" button to begin scanning.

<Notes>

- The settings for Automatic Image Emphasis are shared between the [Binary Image] tab, [Gray Image] tab, and [Color Image] tab.
- This function cannot be used with some scanners.
- This function cannot be used with Automatic Binary/Color Distinction nor with Flatbed.
- Depending on the images to be scanned, the function may not work satisfactorily.