

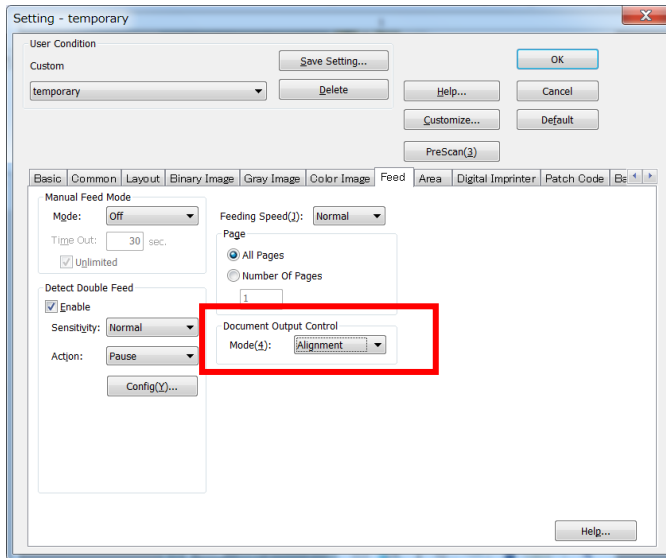
◆ Document Output Control



<Function>

The document output speed is controlled right before each document is output, reducing document output variance.

When output paper does not align, the function is effective.

<ICP Setting Procedures>



1. Click "Scan"  at the left side. The "New Document – Scan" dialog box is displayed.
2. Click "Scan Setting" .
3. Select "Feed" tab.
4. Check "Alignment" Mode
5. Click "OK"
6. Click the "Start" button to begin scanning.

<Notes>

- This function cannot be used with some scanners.
- When the paper path selector of the scanner is set to the straight path (rear exit), the output speed of the documents will not be controlled.