

◆ [Imprinter / Digital Imprinter \(Digital Imprinter\)](#)

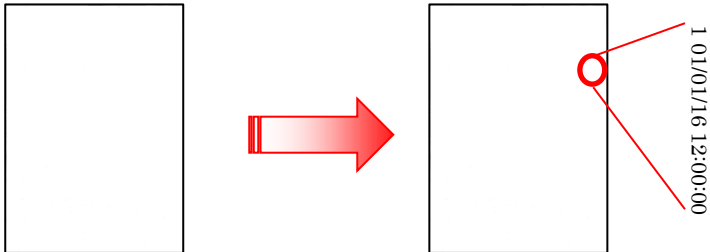
<Function>

This function prints characters strings on the documents to be scanned.

1. Pre Imprinter

Character strings is printed on front side of paper and scanned image..

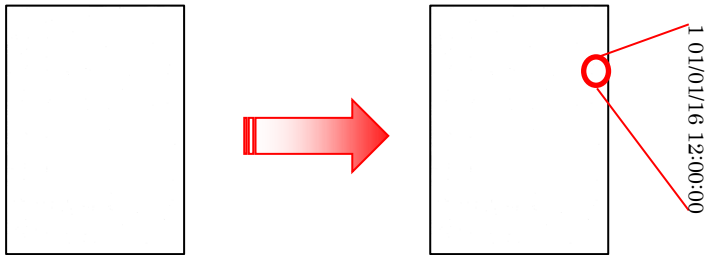
【Blank Sheet】



Front side of paper and scanned image.

2. Post Imprinter

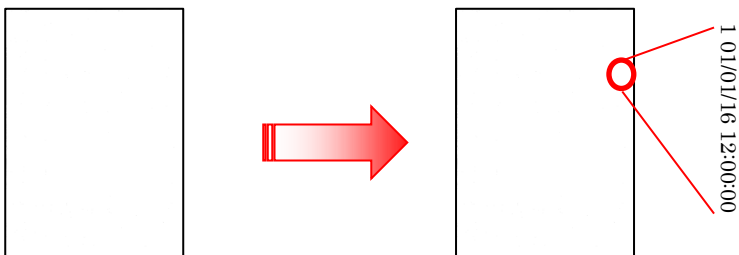
Character strings is printed on back side of paper.



Back side of paper

3. Digital Imprinter

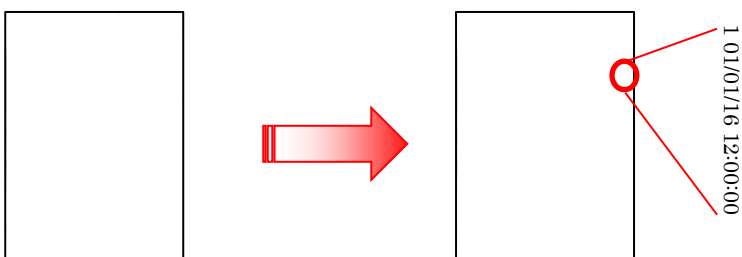
Character strings is added to scanned image (Front/Back/Both).



Scanned image

4. Digital Imprinter + Post Imprinter(Sync with Digital Imprinter)

Character strings is added to scanned image on front side and printed on back side of paper.

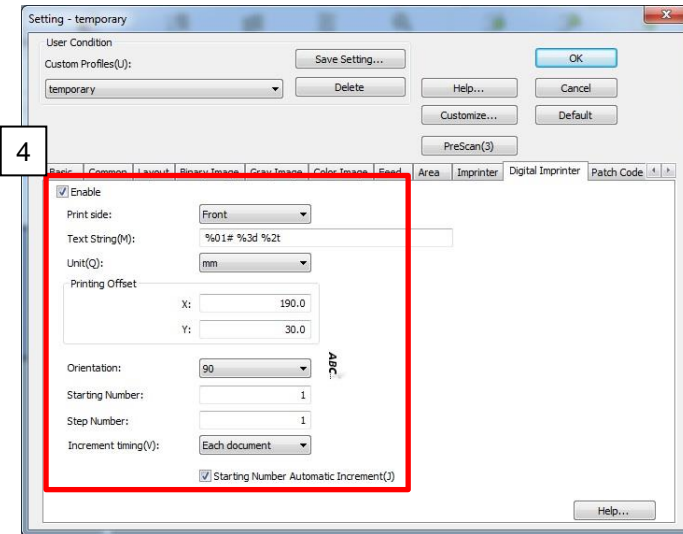




Front side of scanned image and back side of paper.

Digital Imprinter

<ICP Setting Procedures>

Refer to



1. Click "Scan"  at the left side. The "New Document – Scan" dialog box is displayed.
2. Click "Scan Setting" .
3. Select "Digital Imprinter" tab.
4. Check "Enable".
5. Select "Front" in "Print side"
6. Input "%01# %3d %2t" in "Text String" and X: "190" and Y: "30" in "Printing Offset".
See <Notes> about "Text String" and "Printing Offset" for Digital Printer.
7. Check "Starting Number Automatic Increment".
See <Notes> about "Starting Number Automatic Increment".
8. Click "OK"
9. Click the "Start" button to begin scanning.