

◆ Page Menu (Add Last)

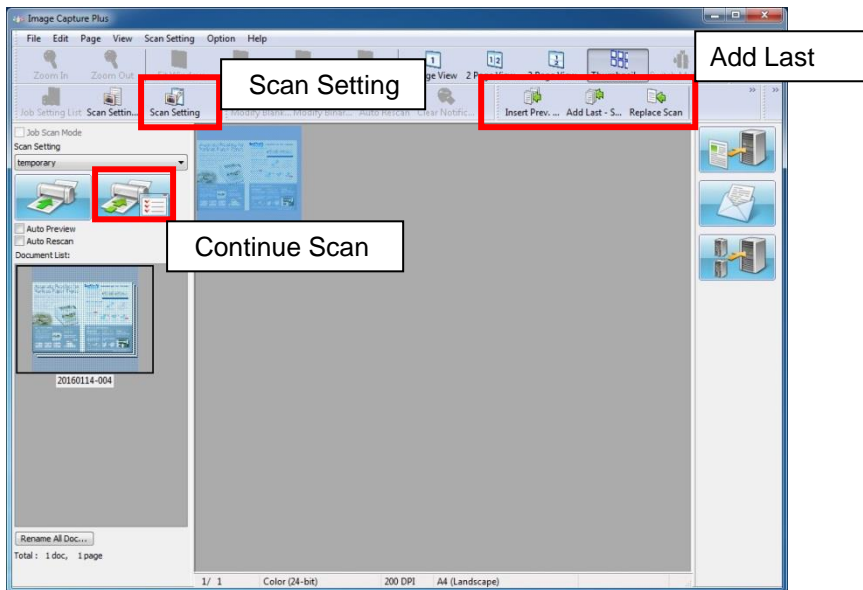
<Function - Add Last>


Adding a scanned image to the end of the document

A fresh image captured from the scanner can be added as the last page of the document that is currently displayed

<ICP Setting Procedures>

Refer to



1. Click "Add Last"  of the tool bar..
2. Scanning starts using the current scan setting.
3. A new image is added to the end of the document.

<Notes>

- When the When the counter printing is set in the imprinter's print string in the scan settings, a window where you can specify the initial counter value appears before scanning starts.
- During this operation, the "Scan as New Document" check box in the "Continue Scan" dialog box is disabled.