

◆ Document Output

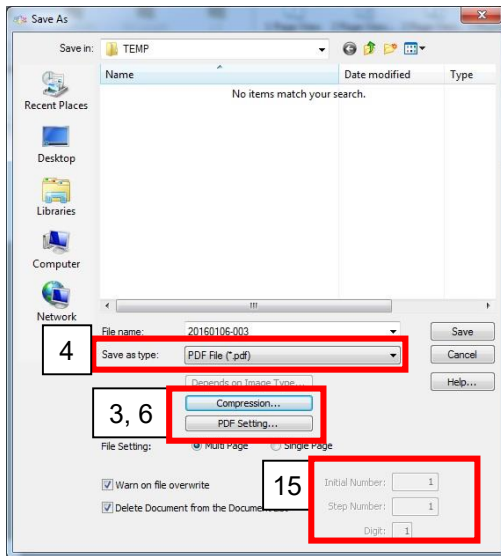
<Function>


You can output a document from “Document List” as an image file.

All the documents selected in “Document List” can be outputted as a document in a specified format.

<ICP Setting Procedures>

Refer to



1. Click “Output Document”  at the right side.
2. The “Save As” dialog box appears.
3. Click “Compression” to confirm the file compression setting for “TIFF File”. If you change, click “OK”.
4. Select “PDF File” as a file format in the “Save as type” list box.
5. Click “Compression” to confirm the file compression setting for “PDF File”. If you change, click “OK”.
6. Select “PDF(Searchable) File” as a file format in the “Save as type” list box.
7. Click “OCR Settings” to confirm the searchable file setting. If you change, click “OK”.
8. Select “Jpeg File” as a file format in the “Save as type” list box.
9. Click “Compression” to confirm the file compression setting for “JPEG File”. If you change, click “OK”.
10. Select “Jpeg2000 File” as a file format in the “Save as type” list box.
11. Click “Compression” to confirm the file compression setting for “Jpeg2000 File”. If you change, click “OK”.
12. Select “Depends on Image Type” in the “Save as type” list box.
13. “File Type Settings” dialog box appears and confirm the settings for each type. If you change, click “OK”.
14. Select “Jpeg File” as a file format in the “Save as type” list box.
15. Confirm the setting of File Name at the bottom right and click “Save”.

<Notes>

- You cannot output an image file whose file size exceeds 2 GB. Please save the image file by dividing it into smaller files, each of whose size is less than 2 GB.
- For the “Bitmap”, “Jpeg”, “JPEG 2000”, “Depends on Image Type” formats, you can select only single page.

- If you are outputting binary images or 4-bit grayscale images and you specify JPEG or JPEG 2000 as the file type, the images will be converted to 8-bit grayscale images.
- If you are outputting 4-bit grayscale images and you specify PDF or PDF/A as the file type, the images will be converted to 8-bit grayscale images.
- “PDF setting”

If there are fewer images than in the specified range, then processing is done only for the range in which there are images.

Among the scanned images, if there are images whose width or height exceeds 32,512 pixels, then an error message appears when the processing the document, and the document will not be output