

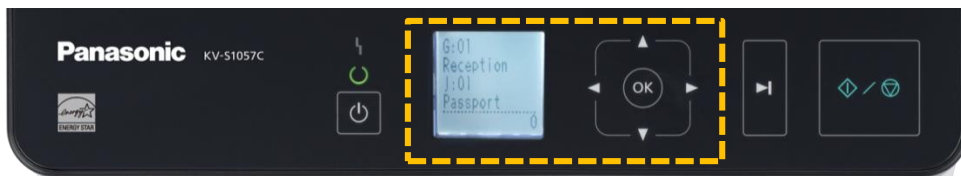
◆ One-touch Scanning

<Function>

Settings can be made with a single press of the button while confirming the desired settings using some scanner's LCD/LED and cursor buttons.

* Previously set jobs must be registered to the scanner using a computer. Some settings can be registered.

KV-S1057C



Models : Number of settings for Single Touch Scanning and device to display on the panel

KV-S1057C/S1027C, KV-S1058Y/S1028Y, KV-S2087, KV-S8147/S8127, KV-S5076H/S5046H : 100 settings / LCD

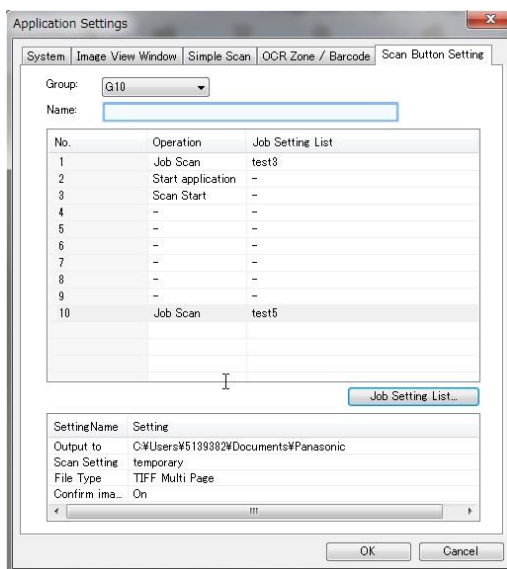
KV-S7097/S7077, KV-SL1066/SL1056, KV-SL3066/S3056 : 9 settings / LED

KV-S1026C/S1015C/S1037 : 3 settings / 3 single touch scan buttons

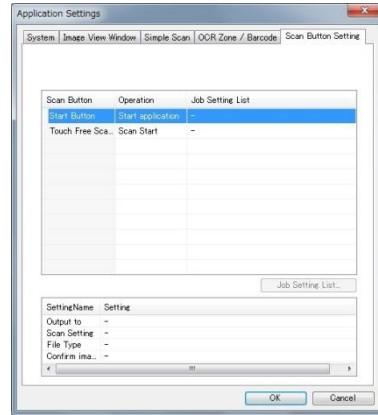
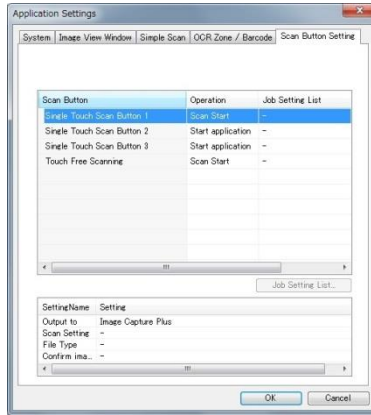
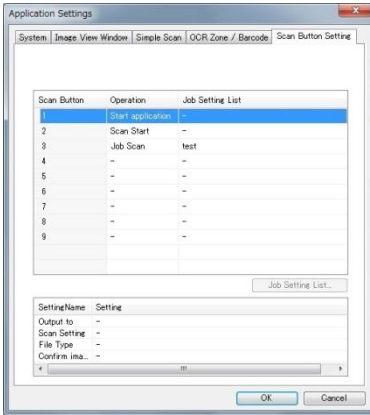
Others : 1 setting / Start/Stop button (No device to display)

Refer to

Scan Button Setting in ICP using KV-S1057C



Scan Button Setting for other models



<ICP Setting Procedures>

1. Select "Scan Button Setting" tab of "Application Settings" in "Option" tab.
2. Select a group in "Group". (10 settings per group, 100 settings in total for KV-S1057C/S1027C, KV-S2087, KV-S5076H)

Select an operation in "Operation".

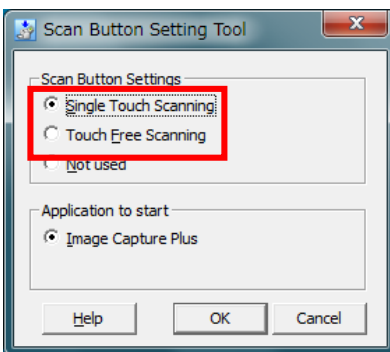
Operation : "Start application", "Scan Start", "Job Scan", "-"

When selecting "Job Scan", select one Job Setting in the Job Setting List

Specify the name of the group in [Name] if necessary.

Click "OK".

Scan Button Setting Tool and operation using KV-S1057C



-Single Touch Scanning-

Scan Button Setting Tool

1. Select "Single Touch Scanning" in the Scan Button Setting Tool.

Panel

"Start ICP"

2. Select a number with operation "Start ICP" on the panel and press "OK" button.
Image Capture Plus starts.

"Scan Start"

3. Select a number with operation "Scan Start" on the panel and press "OK" button.
Image Capture Plus starts and the scanning with the current setting starts.

"Job Setting"

4. Select a number with operation "Job Setting" on the panel and press "OK" button.
Image Capture Plus starts and the Job scanning with the specified setting starts.

-Touch Free Scanning-

Scan Button Setting Tool

1. Select "Touch Free Scanning" in the Scan Button Setting Tool.

Panel

2. Set a document on the tray.
Scanning with the current setting on the panel starts.

<Notes>

- When there already is a scanned document, "Operation" – "Job Scan" cannot be performed.