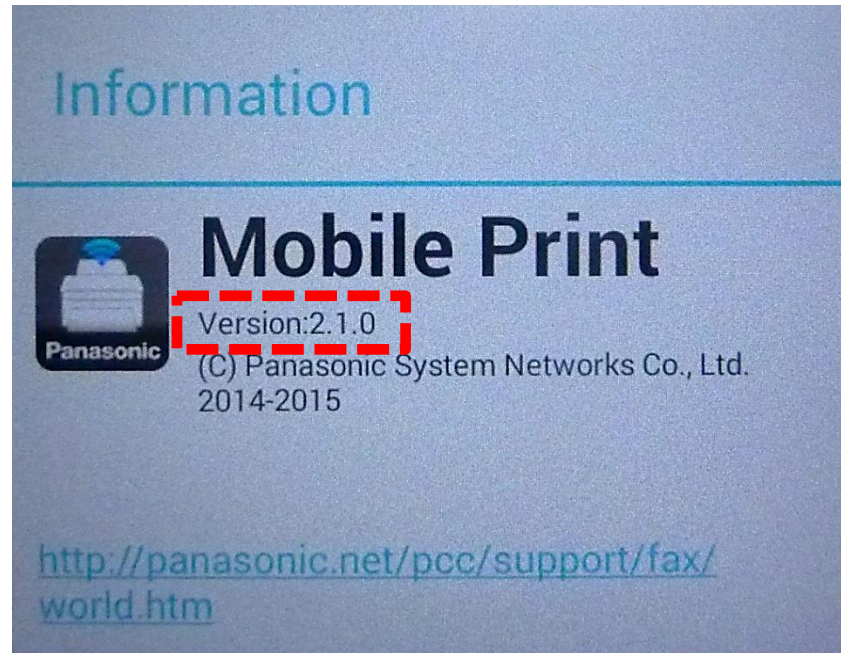
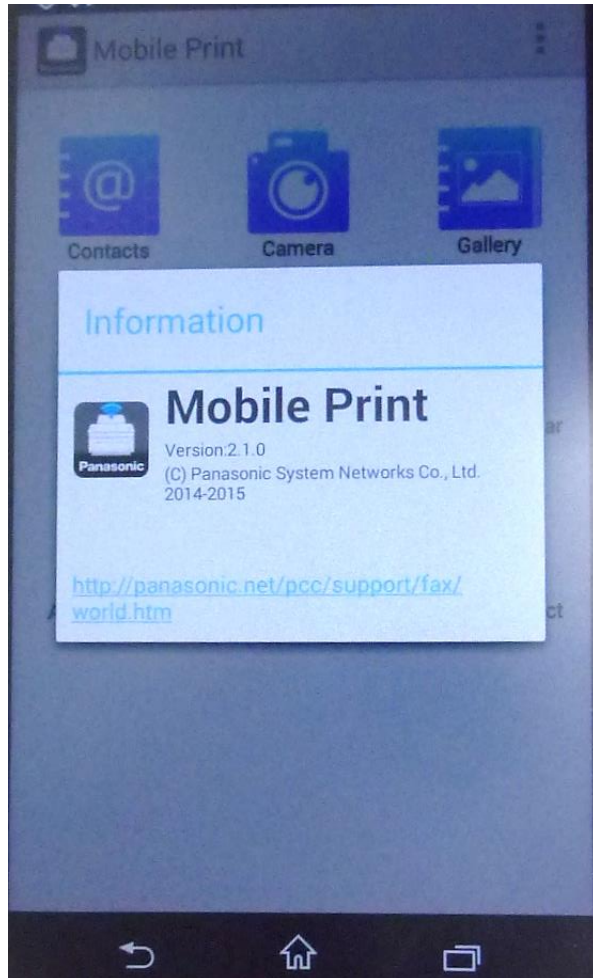


Setup Guide for USB Connection

1. Preparation

1-1. Preparation for Mobile Print Application

Please confirm the version of "Panasonic Mobile Print". (This function can be used with [Ver. 2.1.0 or later.](#))

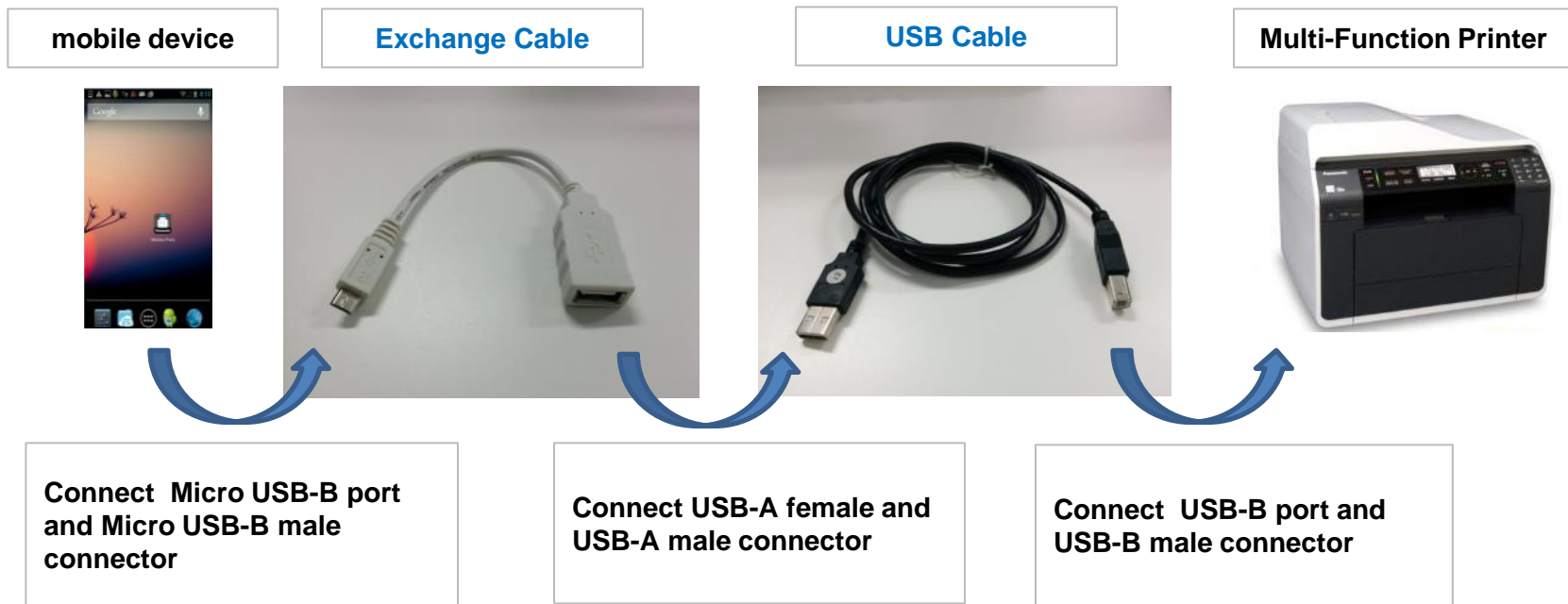


To enable this feature, you need to install the "Mobile Print" (Panasonic application) on your mobile device (only Android™ 4.0 to 5.0).

Setup Guide for USB Connection

1-2. Preparation in Connecting the devices

Connect Multi-Function Printer to mobile device by **Exchange Cable** and **USB Cable**.



***Note for "Exchange Cable:**

Please use the Exchange Cable which mentioned on the box that

"This adaptor will only work with devices that support USB OTG."

Please consult your documentation and/ or your service provider to ensure that your device does support USB OTG functionality.

Setup Guide for USB Connection

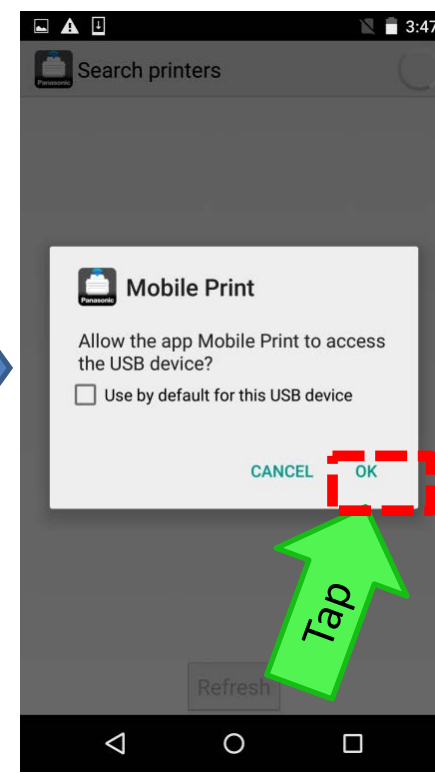
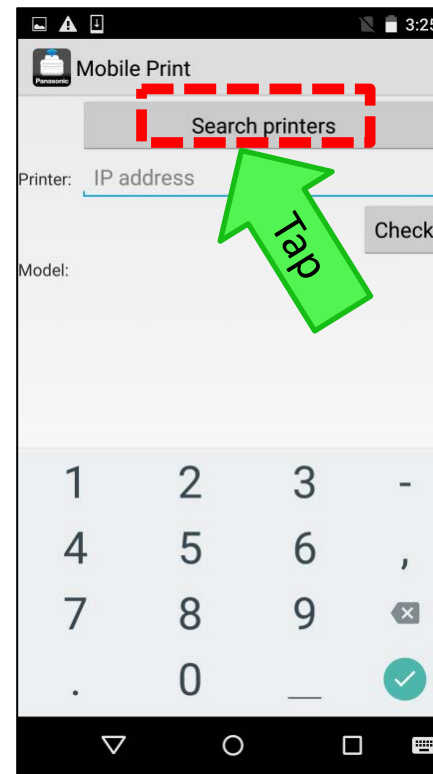
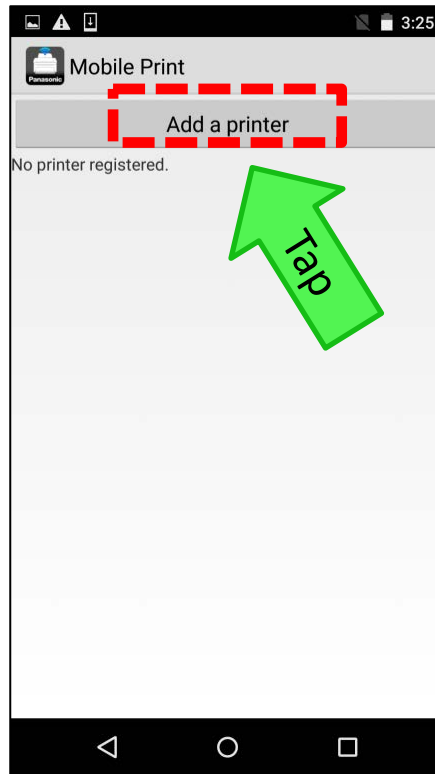
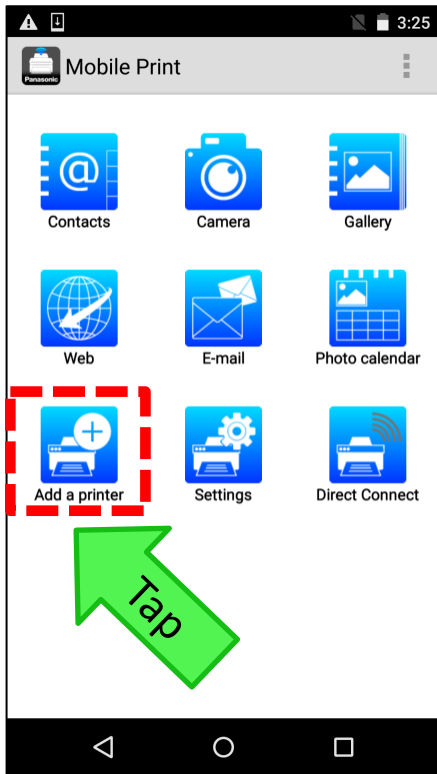
2. Setup Procedure (how to add the Printer)

Tap "Add a printer"

Tap "Add a printer"

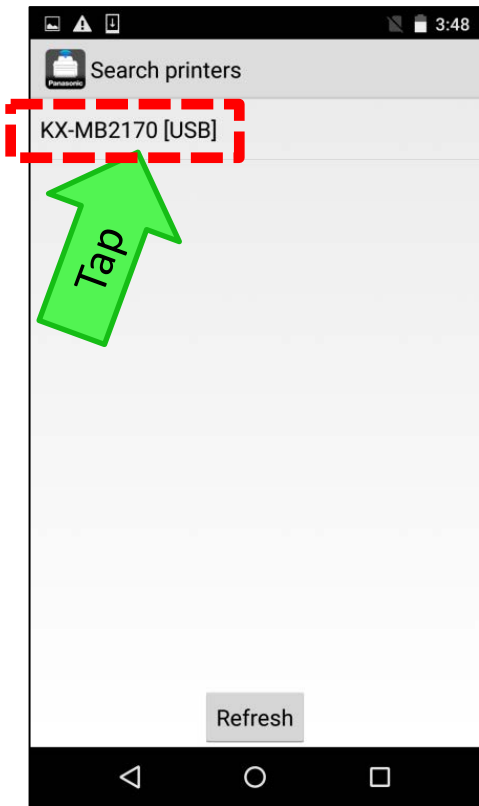
Tap "Search printers"

Tap "OK"

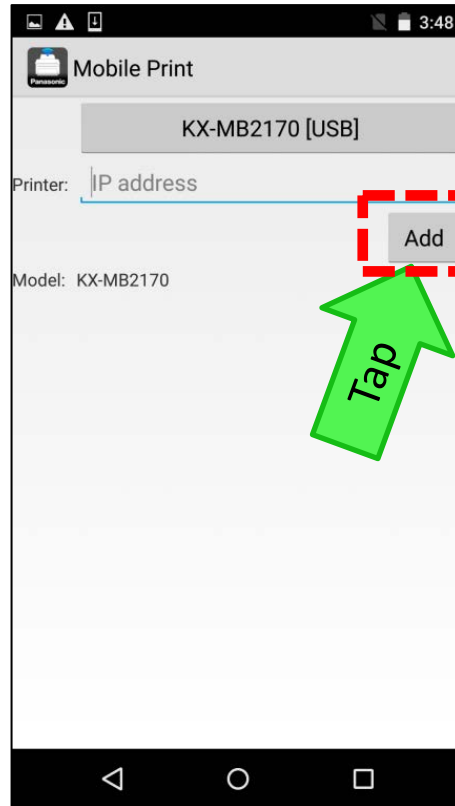


Setup Guide for USB Connection

Tap "Printer Name"



Tap "Add"



Printer is added

