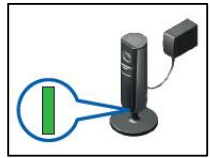


(1) How to setup HD Camera on Android devices

Plug in the HD cam and wait about a minute for the LED to turn solid green



Download the Panasonic Home Network app from Google play store and open it.



Select Next



Select HD Camera



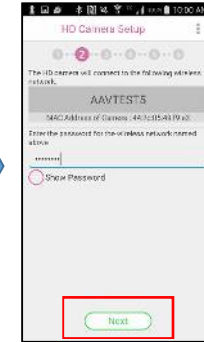
Select Setup the HD Camera



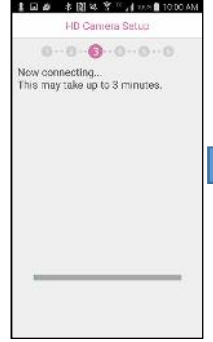
Press the Setup button on the HD Camera



Enter your Wi-Fi password.



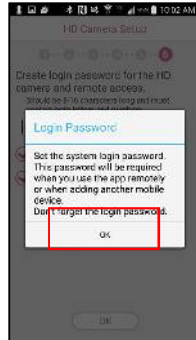
Please wait for about 3 minutes



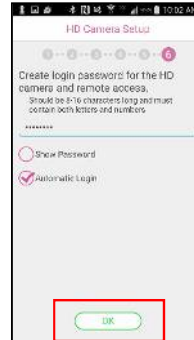
Press the Setup button on the HD Camera



Select OK



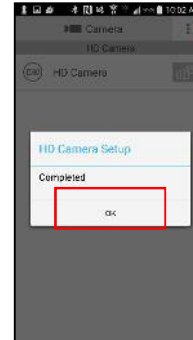
Create a Login Password and select OK



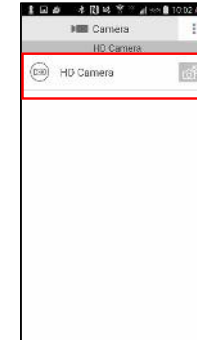
Enter a name for your mobile device and select OK.



Select OK



Select your HD camera to view it live.



Completed !

