

Module house business

Bangkok, Thailand



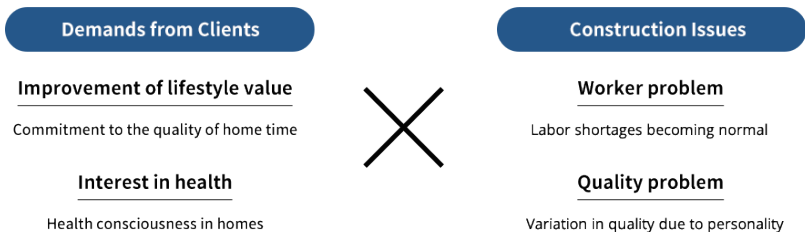
■ Panasonic are offering spatial packages with modular architecture to help solve Thailand's social problems.

COVID-19 has changed our daily lives. Hygiene awareness regarding things like hand washing, gargling, and ventilation has increased, and we are all spending more time at home. More than ever before, high added value such as safety, security and health is being demanded of housing.

On the other hand, issues such as labor shortages and quality problems in the construction industry are becoming apparent. In Thailand, the aging of the population is progressing, and the need for clean long-term care environments is increasing.

To meet these needs and respond to social issues in Thailand, Panasonic are proposing solutions that will realize unprecedented health, safety, security, and comfort through housing equipment, air conditioning and sanitary equipment that considers lighting and air quality.

Solving issues with Panasonic solutions



New Value Provided by Panasonic through Modular Architecture

For this project, Panasonic accelerated the deployment of products and devices to meet new environmental changes and needs, and provided spatial packages using modular architecture. By combining modular architecture with Panasonic's cutting-edge technology, we are able to provide the solutions that will be required in the future, such as enabling families to spend time in their homes safely and securely, and realizing healthy and comfortable air environments.

<p>Health</p> <p>Purifies living environments, including the air to provide healthy lifestyles</p>	<p>Convenience</p> <p>Achieves high quality and saves on construction, allowing for extensions and shortened construction periods</p>	<p>Comfort</p> <p>Realizes connected home appliances with high value-added products</p>
---	--	--

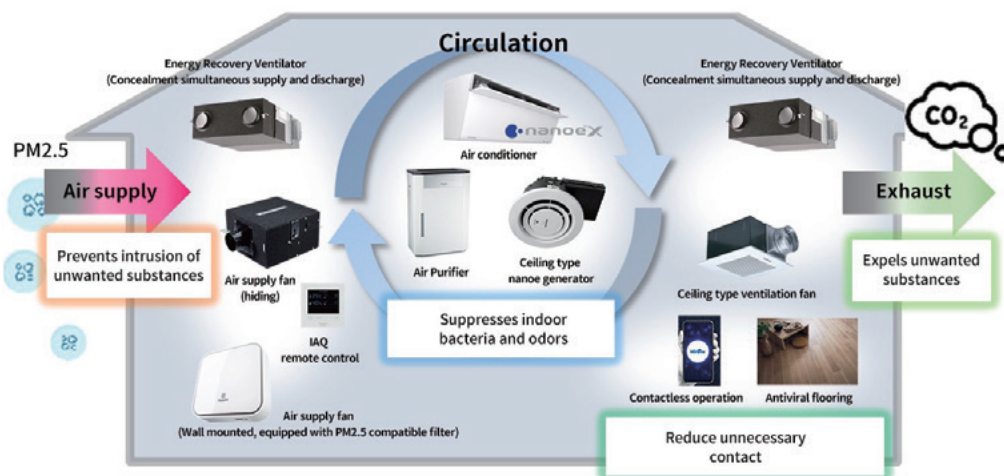
Health

Realizes healthy lifestyles in comfortable air environments.

Panasonic has a variety of air conditioning and air quality equipment based on the concept of "Quality Air for Life," including a quiet ventilation fan that expels dirty air, and an air conditioner equipped with its electrostatic atomized water particle "nanoEX" device, which suppresses bacteria and odors in the air. It also offers an air purifier that absorbs indoor PM2.5 and house dust, and an ERV and air supply fan that prevents unwanted substances from entering from the outside. With these products, Panasonic is providing environments in accordance with the health consciousness of residents.

In addition, by linking these devices to realize touchless interactions and suppress viruses, we provide a space that supports a comfortable, secure, and healthy life.

Image of healthy and secure living by linking devices



Convenient construction

Achieves high quality and saves on construction, Shortening construction times. Extensions are also simple.

Industrialized buildings that can be easily expanded or relocated on-site by assembling stable, high quality and high value-added units in a short period of time at the factory. Assembling on a per-unit level reduces labor and allows for fast construction on-site. Create spaces that support flexible layout changes such as second households and remodeling.

On-site construction



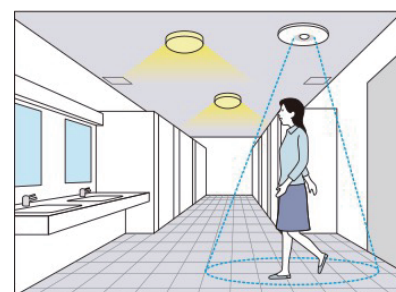
Comfort and contentment

Further enhance your time at home with our unique nursing care products and housing equipment.

With COVID-19, people are spending more time at home, and there is a growing need to improve our quality of life. Panasonic is catering to this need in three ways: Touchless safety, fulfillment in new time spent at home, and comfort for all ages.

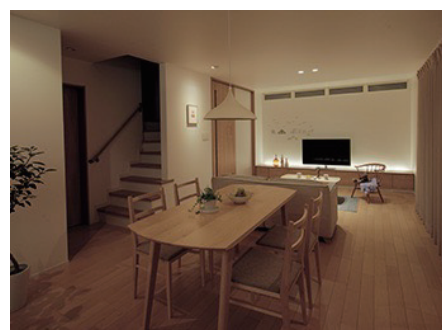
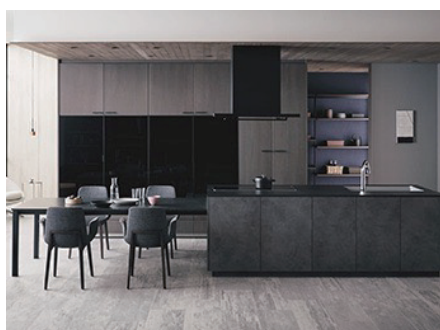
Touchless safety

Lighting can be easily controlled using the sensor switch. Hygienic touchless operation provides peace of mind. The lights turn on automatically upon your return home, so you can wash your hands without touching the switch.



Fulfillment in new time spent at home

Downlights sit flush with the ceiling, creating a space with a sense of openness. In addition to energy saving, the downlights also provide a distinct quality of light, offering a spatial experience to further enhance your time spent at home. A kitchen with excellent design and storage capabilities and a luxurious bathroom to wash away the day's fatigue and soothe your body and soul also help make your new time spent at home even more comfortable.



Comfort for all ages

Particularly in an aging society, there is a demand for equipment and facilities that allow people of all ages to live comfortably. In July 2021, Panasonic introduced Robotic Care Bed / Wheelchair Resyone Plus, a robot which assists in leaving bed and makes it easier for the elderly to move around.



Spatial value for the new normal era, created together with a local partner

Panasonic has aimed to provide new lifestyles and spaces in collaboration with Thailand's Siam Steel International PLC. By combining the modular construction of Siam Steel, a major steel products and building materials company in Thailand, with Panasonic products and devices that are in line with the new normal era, we will realize high quality, short construction periods, and high added value. With the ambitions of the two companies in agreement—aiming to solve Thailand's construction industry problems and delivering living spaces which cater to new lifestyles—we have collaborated to provide healthy and comfortable spaces unlike any others.



New products and devices responding to environmental changes and needs



Modular building built on the premises of Thai Siam Steel headquarters in March 2021



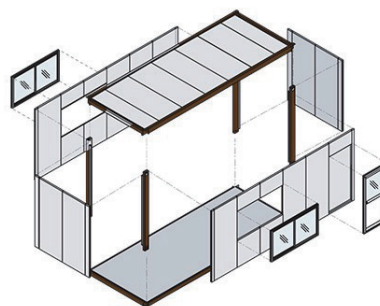
Modular architecture Provided by Siam Steel



[Establishment] 1953
 [Business scale (whole group)] Approx. 58 billion THB (approx. 200 billion yen)
 [Business] Manufacture and sale of prefabricated houses and system furniture

Developing future accommodation facilities for factory and construction site workers

In Thailand, there is a need for thorough infection prevention measures in the wake of COVID-19. Looking ahead, as a part of this response Panasonic will develop accommodation for factory and construction site workers, offering modular housing with short build times and high quality to its corporate customers. With its minimal and comfortable spatial design, Panasonic is helping to solve its corporate customers' issues at factories and construction sites.



Panasonic
high-quality product

- Indoor downlight
- Wiring Device
- nanoe X generator
- Ventilation fan
- Air-conditioning

ACCOMMODATION UNIT Construction Examples



As a leading company in electrical materials and housing equipment, Panasonic will continue to propose solutions that realize healthy, safe, secure, and comfortable spaces globally by making use of the technologies and know-how that we have cultivated so far.

Installed Products



Switch & Receptacle



LED Downlight



Ventilation System



Kitchen



Air conditioners with nanoeX technology

