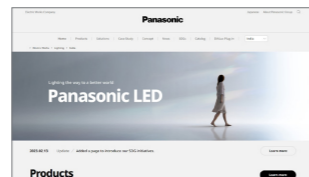


Panasonic

Panasonic Lighting - Product Quality Testing



Learn more about Panasonic lighting



Please contact

Panasonic®

All Rights Reserved © 2024 COPYRIGHT Panasonic Corporation Electric Works Company

LT63 2024.03

Specifications are subject to change without notice.

ISO 9001/14000

Pro iD Series Baselight

High Efficacy

2024.03



Pro iD Series - High Efficacy -



Long Lifetime
50,000H



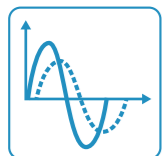
CRI
80



High Efficacy
179-182lm/W



Durability
Body: Steel



Power Factor
0.95

Certification

RoHS / TISI

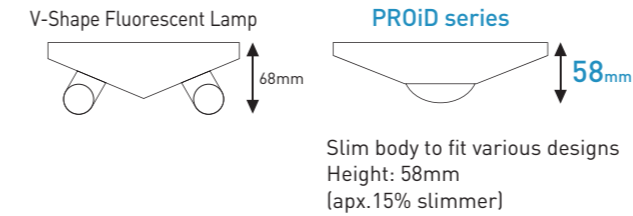
*Certification applicable for selected models.
*Spec and certification may change without notice.

Design Concept – 3 main concepts

Smart & Stylish Design

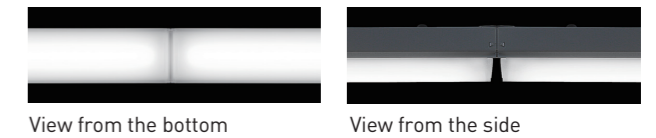
Utilizing a LED light bar for a simple and safe design.

- Even light distribution
- LED light bar securely attaches to the fixture body eliminating any risk of it falling.



Seamless and even line light when connecting multiple units.

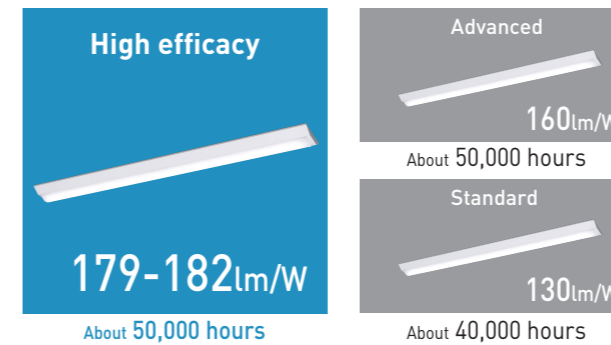
The light is distributed evenly minimizing any dark spots so that when multiple units are connected, the edges are not noticeable.



Extremely Efficient

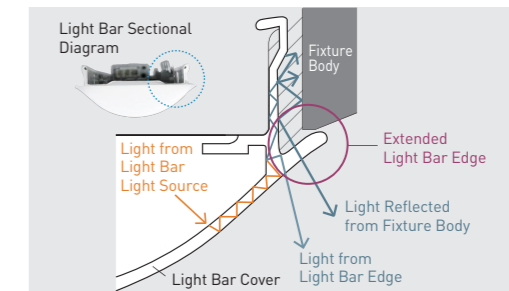
An extremely efficient and energy saving LED light bar.

The rated system efficacy is up to 180lm/W (5000K hours) About 50,000 hours (high efficacy type), about 40,000 hours (standard type) long lifetime (L70, ta25°C)



The light bar is specifically shaped and coated to avoid any waste of light.

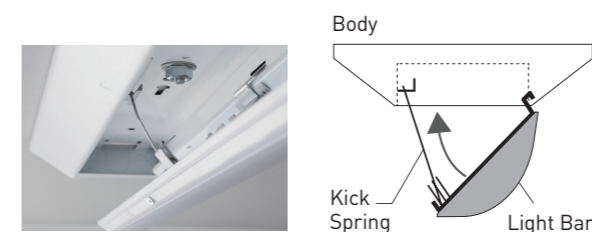
Continuous light emission from the light bar to the fixture body is achieved by the cover edge of the light bar which covers the gap between the light bar and the fixture body. Specialized internal coating reduces the amount of light loss with special white coating inside the body of the fixture which redirects the light emitted inside the fixture outwards.



Installation & Maintenance Friendly

Sleek and stylish design thanks to the utilization of internal kick springs.

Sleek and stylish design due to there being no screws and latches on the fixture's surface.



Various choices of light bars and body types available to meet various layouts. Changing light bars even after installation is easy.



Batten Type

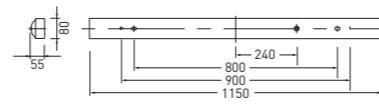
Series Lineup

Specification

Rated Voltage	220-240V
Frequency	50/60Hz
Lifetime	50,000 hours
CRI	80
Ambient Temperature Range	5°C-35°C
Power Factor	0.95
Materials	Body: Steel (White paint) Panel: GPC Opal shad
IP Rating	IP20
Classification of Luminaires	Class I
THDi	<10%
SDCM	5



Dimension



Size : 1150x80x55mm
Weight : 1.6kg

Data

System Flux	4000 lm type	7000 lm type
Wattage	22W	39W
Type	High Efficacy [Lifetime: 50,000 hours]	High Efficacy [Lifetime: 50,000 hours]
Non Dimming	4000K ○	NFV40240WE1A 4000 lm, 182lm/W
	5000K ○	NFV40290WE1A 4000 lm, 182lm/W
	6500K ●	NFV40340WE1A 4000 lm, 182lm/W
Non Dimming	4000K ○	NFV40245WE1A 7000 lm, 179lm/W
	5000K ○	NFV40295WE1A 7000 lm, 179lm/W
	6500K ●	NFV40345WE1A 7000 lm, 179lm/W
Photometric Distribution		
cd/klm (=100%)	<ul style="list-style-type: none"> — C0, C180 — C90, C270 	

V-Shape Type

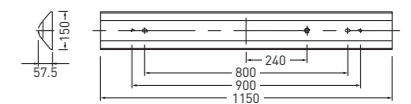
Series Lineup

Specification

Rated Voltage	220-240V
Frequency	50/60Hz
Lifetime	50,000 hours
CRI	80
Ambient Temperature Range	5°C-35°C
Power Factor	0.95
Materials	Body: Steel (White paint) Panel: GPC Opal shad
IP Rating	IP20
Classification of Luminaires	Class I
THDi	<10%
SDCM	5



Dimension



Size : 1150x150x57.5mm
Weight : 1.9kg

Data

System Flux	4000 lm type	7000 lm type
Wattage	22W	39W
Type	High Efficacy [Lifetime: 50,000 hours]	High Efficacy [Lifetime: 50,000 hours]
Non Dimming	4000K ○	NFV40241WE1A 4000 lm, 182lm/W
	5000K ○	NFV40291WE1A 4000 lm, 182lm/W
	6500K ●	NFV40341WE1A 4000 lm, 182lm/W
Non Dimming	4000K ○	NFV40246WE1A 7000 lm, 179lm/W
	5000K ○	NFV40296WE1A 7000 lm, 179lm/W
	6500K ●	NFV40346WE1A 7000 lm, 179lm/W
Photometric Distribution		
cd/klm (=100%)	<ul style="list-style-type: none"> — C0, C180 — C90, C270 	

Reflector Type

Series Lineup

Specification

Rated Voltage	220-240V
Frequency	50/60Hz
Lifetime	50,000 hours
CRI	80
Ambient Temperature Range	5°C-35°C
Power Factor	0.95
Materials	Body: Steel (White paint) Panel: GPC Opal shad
IP Rating	IP20
Classification of Luminaires	Class I
THDi	<10%
SDCM	5



Dimension



Size : 1150x150x65mm
Weight : 1.85kg

Data

System Flux	4000 lm type	7000 lm type
Wattage	22W	39W
Type	High Efficacy [Lifetime: 50,000 hours]	High Efficacy [Lifetime: 50,000 hours]
Non Dimming	4000K ○	NFV40242WE1A 4000 lm, 182lm/W
	5000K ○	NFV40292WE1A 4000 lm, 182lm/W
	6500K ●	NFV40342WE1A 4000 lm, 182lm/W
Non Dimming	4000K ○	NFV40247WE1A 7000 lm, 179lm/W
	5000K ○	NFV40297WE1A 7000 lm, 179lm/W
	6500K ●	NFV40347WE1A 7000 lm, 179lm/W
Photometric Distribution		
cd/klm (=100%)	<ul style="list-style-type: none"> — C0, C180 — C90, C270 	

Recessed Type Width 150mm

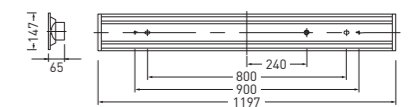
Series Lineup

Specification

Rated Voltage	220-240V
Frequency	50/60Hz
Lifetime	50,000 hours
CRI	80
Ambient Temperature Range	5°C-35°C
Power Factor	0.95
Materials	Body: Steel (White paint) Panel: GPC Opal shad
IP Rating	IP20
Classification of Luminaires	Class I
THDi	<10%
SDCM	5



Dimension



Size : 1197x147x65mm
Weight : 2.3kg
Celling Cut out size: 125x1185mm

Data

System Flux	4000 lm type	7000 lm type
Wattage	22W	39W
Type	High Efficacy [Lifetime: 50,000 hours]	High Efficacy [Lifetime: 50,000 hours]
Non Dimming	4000K ○	NFV40243WE1A 4000 lm, 182lm/W
	5000K ○	NFV40293WE1A 4000 lm, 182lm/W
	6500K ●	NFV40343WE1A 4000 lm, 182lm/W
Non Dimming	4000K ○	NFV40248WE1A 7000 lm, 179lm/W
	5000K ○	NFV40298WE1A 7000 lm, 179lm/W
	6500K ●	NFV40348WE1A 7000 lm, 179lm/W
Photometric Distribution		
cd/klm (=100%)	<ul style="list-style-type: none"> — C0, C180 — C90, C270 	

