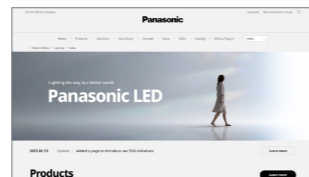


Panasonic

Panasonic Lighting - Product Quality Testing



Learn more about Panasonic lighting



Please contact

Panasonic®

All Rights Reserved © 2024 COPYRIGHT Panasonic Corporation Electric Works Company

LT63 2024.03

Specifications are subject to change without notice.

ISO 9001/14000

2024.03

Pro iD Series Baselight



Pro iD Series



Long Lifetime
40,000-50,000H



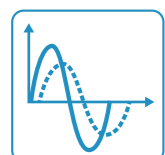
CRI
80



High Efficacy
129-150lm/W



Durability
Body: Steel



Power Factor
0.9

Certification

RoHS / CISPR15 / TISI / CR

*Certification applicable for selected models.
*Spec and certification may change without notice.

Batten Type

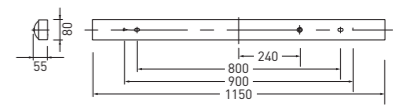
Series Lineup

Specification

Rated Voltage 220-240V
 Frequency 50/60Hz
 Lifetime Standard: 40,000 hours
 Advanced: 50,000 hours
 CRI 80
 Ambient Temperature Range 5°C-35°C
 Power Factor 0.9
 Materials Body: Steel (White paint)
 Panel: GPC Opal shad
 IP Rating IP20



Dimension

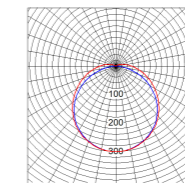


Size : 1150x80x55mm
Weight : 1.6kg

Data

System Flux	4000 lm type		7000 lm type	
	31W	26W	54W	44W
Wattage	31W	26W	54W	44W
Type	Standard (Lifetime: 40,000 hours)	Advanced (Lifetime: 50,000 hours)	Standard (Lifetime: 40,000 hours)	Advanced (Lifetime: 50,000 hours)
Non Dimming	4000K ○	NNFC4005888 4000lm,129lm/W	NNFC4006188 4000lm,154lm/W	NNFC7008488 7000lm,130lm/W
	5000K ○	NNFC4010888 4000lm,129lm/W	NNFC4011188 4000lm,154lm/W	NNFC7013488 7000lm,159lm/W
	6500K ●	NNFC4015888 4000lm,129lm/W	NNFC4016188 4000lm,154lm/W	NNFC7018488 7000lm,159lm/W

Photometric Distribution



cd/klm (=100%)
 — C0, C180
 — C90, C270

Reflector Type

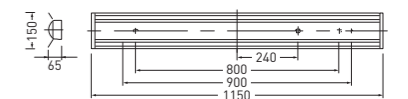
Series Lineup

Specification

Rated Voltage 220-240V
 Frequency 50/60Hz
 Lifetime Standard: 40,000 hours
 Advanced: 50,000 hours
 CRI 80
 Ambient Temperature Range 5°C-35°C
 Power Factor 0.9
 Materials Body: Steel (White paint)
 Panel: GPC Opal shad
 IP Rating IP20



Dimension

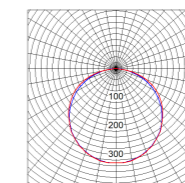


Size : 1150x150x65mm
Weight : 1.85kg

Data

System Flux	4000 lm type		7000 lm type	
	31W	26W	54W	44W
Wattage	31W	26W	54W	44W
Type	Standard (Lifetime: 40,000 hours)	Advanced (Lifetime: 50,000 hours)	Standard (Lifetime: 40,000 hours)	Advanced (Lifetime: 50,000 hours)
Non Dimming	4000K ○	NNFC4005988 4000lm,129lm/W	NNFC4006288 4000lm,154lm/W	NNFC7008288 7000lm,130lm/W
	5000K ○	NNFC4010988 4000lm,129lm/W	NNFC4011288 4000lm,154lm/W	NNFC7013288 7000lm,159lm/W
	6500K ●	NNFC4015988 4000lm,129lm/W	NNFC4016288 4000lm,154lm/W	NNFC7018288 7000lm,159lm/W

Photometric Distribution



cd/klm (=100%)
 — C0, C180
 — C90, C270

V-Shape Type

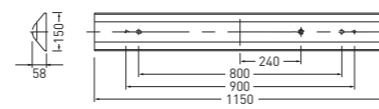
Series Lineup

Specification

Rated Voltage	220-240V
Frequency	50/60Hz
Lifetime	Standard: 40,000 hours Advanced: 50,000 hours
CRI	80
Ambient Temperature Range	5°C-35°C
Power Factor	0.9
Materials	Body: Steel (White paint) Panel: GPC Opal shad
IP Rating	IP20



Dimension



Size : 1150x150x58mm
Weight : 1.9kg

Data

System Flux	4000 lm type		7000 lm type	
	31W	26W	54W	44W
Wattage	Standard (Lifetime: 40,000 hours)	Advanced (Lifetime: 50,000 hours)	Standard (Lifetime: 40,000 hours)	Advanced (Lifetime: 50,000 hours)
Type				
Non Dimming	4000K	NNFC4006088 4000lm, 129lm/W	NNFC4006388 4000lm, 154lm/W	NNFC7008388 7000lm, 130lm/W
	5000K	NNFC4011088 4000lm, 129lm/W	NNFC4011388 4000lm, 154lm/W	NNFC7013388 7000lm, 130lm/W
	6500K	NNFC4016088 4000lm, 129lm/W	NNFC4016388 4000lm, 154lm/W	NNFC7017588 7000lm, 159lm/W
Photometric Distribution				
cd/klm (=100%)	<ul style="list-style-type: none"> — C0, C180 — C90, C270 			

Recessed Type Width 300mm

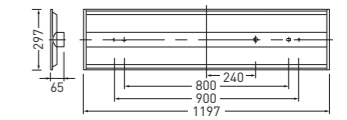
Series Lineup

Specification

Rated Voltage	220-240V
Frequency	50/60Hz
Lifetime	Standard: 40,000 hours Advanced: 50,000 hours
CRI	80
Ambient Temperature Range	5°C-35°C
Power Factor	0.9
Materials	Body: Steel (White paint) Panel: GPC Opal shad
IP Rating	IP20



Dimension



Size : 1197x297x65mm
Weight : 3.3kg
Ceiling Cut out size: 275x1185mm

Data

System Flux	4000 lm type		7000 lm type	
	31W	26W	54W	44W
Wattage	Standard (Lifetime: 40,000 hours)	Advanced (Lifetime: 50,000 hours)	Standard (Lifetime: 40,000 hours)	Advanced (Lifetime: 50,000 hours)
Type				
Non Dimming	4000K	NNFC4006488 4000lm, 129lm/W	NNFC4006588 4000lm, 154lm/W	NNFC7106488 7000lm, 130lm/W
	5000K	NNFC4011488 4000lm, 129lm/W	NNFC4011588 4000lm, 154lm/W	NNFC7111488 7000lm, 130lm/W
	6500K	NNFC4016488 4000lm, 129lm/W	NNFC4016588 4000lm, 154lm/W	NNFC7116488 7000lm, 159lm/W
Photometric Distribution				
cd/klm (=100%)	<ul style="list-style-type: none"> — C0, C180 — C90, C270 			

Recessed Type Width 150mm

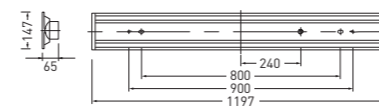
Series Lineup

Specification

Rated Voltage	220-240V
Frequency	50/60Hz
Lifetime	Standard: 40,000 hours Advanced: 50,000 hours
CRI	80
Ambient Temperature Range	5°C-35°C
Power Factor	0.9
Materials	Body: Steel (White paint) Panel: GPC Opal shad
IP Rating	IP20



Dimension



Size : 1197x147x65mm
Weight : 2.3kg
Ceiling Cut out size: 125x1185mm

Data

System Flux	4000 lm type		7000 lm type	
	31W	26W	54W	44W
Wattage	Standard (Lifetime: 40,000 hours)	Advanced (Lifetime: 50,000 hours)	Standard (Lifetime: 40,000 hours)	Advanced (Lifetime: 50,000 hours)
Type				
Non Dimming	4000K	NNFC4006688 4000lm, 129lm/W	NNFC4006788 4000lm, 154lm/W	NNFC7106688 7000lm, 130lm/W
	5000K	NNFC4011688 4000lm, 129lm/W	NNFC4011788 4000lm, 154lm/W	NNFC7111688 7000lm, 130lm/W
	6500K	NNFC4016688 4000lm, 129lm/W	NNFC4016788 4000lm, 154lm/W	NNFC7116788 7000lm, 159lm/W
Photometric Distribution				
cd/klm (=100%)	<ul style="list-style-type: none"> — C0, C180 — C90, C270 			

Recessed Square Type

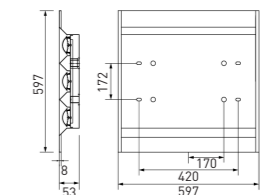
Series Lineup

Specification

Rated Voltage	220-240V
Frequency	50/60Hz
Lifetime	Standard: 40,000 hours Advanced: 50,000 hours
CRI	80
Ambient Temperature Range	5°C-35°C
Power Factor	0.95
Materials	Body: Steel (White paint) Panel: PC (Frost)
IP Rating	IP20



Dimension



Size : 597x597x53mm
Weight : 3.8kg
Ceiling Cut out size: 575x575mm

Data

System Flux	4000 lm type		7000 lm type	
	30.5W	25.5W	53.5W	43.5W
Wattage	Standard (Lifetime: 40,000 hours)	Advanced (Lifetime: 50,000 hours)	Standard (Lifetime: 40,000 hours)	Advanced (Lifetime: 50,000 hours)
Type				
Non Dimming	4000K	NFV40212WE1A 4000lm, 131lm/W	NFV40214WE1A 4000lm, 157lm/W	NFV40213WE1A 7000lm, 131lm/W
	5000K	NFV40262WE1A 4000lm, 131lm/W	NFV40264WE1A 4000lm, 157lm/W	NFV40263WE1A 7000lm, 131lm/W
	6500K	NFV40312WE1A 4000lm, 131lm/W	NFV40314WE1A 4000lm, 157lm/W	NFV40313WE1A 7000lm, 131lm/W
Photometric Distribution				
cd/klm (=100%)	<ul style="list-style-type: none"> — C0, C180 — C90, C270 			

