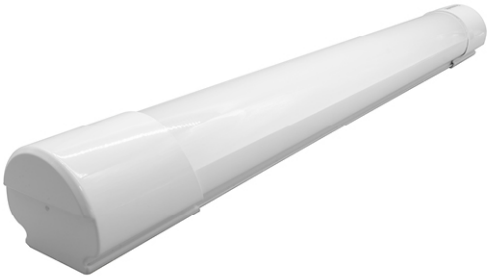


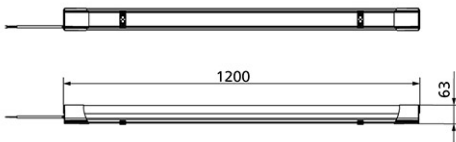
Panasonic



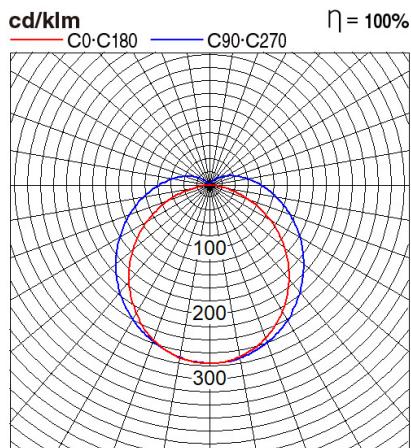
Certificates & Standards

RoHs / TISI

Dimension and Materials



Photometric Chart



Ref. No.	
Type of Luminaire	Batten
	Waterproof Batten
	SP Splash Proof Low Temperature Type
Set Model No.	NFV30307GE
Type of Light Source	LED
Power Input	54W
System Lumen Output	6000 lm
System Efficacy	111 lm/W
Power Voltage	220-240V
Power Factor	0.95
Lifetime	30000H(L70)
CCT	5000K
CRI	80
SDCM	<5
Input Frequency	50/60Hz
Dimming	non-Dimmable
Dimming Range	
UGR	
Glare Cut Angle	
Beam Angle	120deg.
Rotation Angle	
Tilt Angle	
IP code	65
IK code	
Ambient Temperature Range	-40 - 40°C
Surge Protection	
Classification of Luminaires	Class II
THDi	
Effective Projected Area	
Driver	Integrated
Cut Out Size	
Dimensions	73mm*1200mm*63mm
Weight	0.6 kg
Body	PC(White)
Reflector	
Diffuser	
Trim	
Casing	
Country of Origin	China
Brand	Panasonic
Remarks	moisture condensation proof designed

Others

Spec and certification may change without notice.