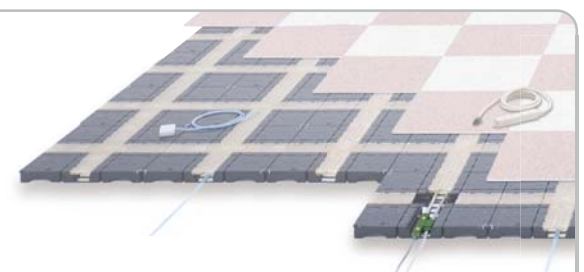


**The
Solutions
Catalogue**

Cable Storage Keeps the Office Neat & Clean

OK!JIKI



Checkpoints for Introducing the OKIJKI System

- 1 Product Selection**
 - (1) OKIJKI panels (FPV/FPZ)
 - (2) Finishing materials (tile carpet, PVC tiles, etc.)
 - (3) Wiring fixtures (Easy Wiring, outlet types, data cables)
- 2 Installation Range**
 - (1) Floor repair, dismantling and removal, and wiring removal
 - (2) Move furnishings (yes/no), remodelling doors, slopes or frames (yes/no)
 - (3) Range and scale of OKIJKI panel installation, combination of FPV and FPZ (yes/no)
 - (4) Install finishing materials (yes/no) and their specifications and scale, baseboard (yes/no)
 - (5) Other supplementary work (yes/no)
- 3 Wiring Range**
(Done by Subcontractor)
 - (1) Remove existing secondary wiring
 - (2) Utilise existing wiring (yes/no) (power, telephone, data)
 - (3) Installation location, specifications, quantity of connected devices
- 4 Draw up Total Work Schedule**
 - (1) Initial examination, price quote, meeting
 - (2) Confirm construction range
 - (3) Confirm necessary materials, specifications, quantity, and scale
 - (4) Determine transport and work schedule
 - (5) Installation inspection, hand over

Contact us for inquiries on products, installation, repair and maintenance.

PT. Panasonic Gobel Eco Solutions Manufacturing Indonesia
Jl. Raya Narogong Km. 23.8 Cileungsi
Bogor 16820, Jawa Barat – Indonesia
Tel. (62-21) 8230054 (Hunting) Fax. (62-21) 8230339, 8230340

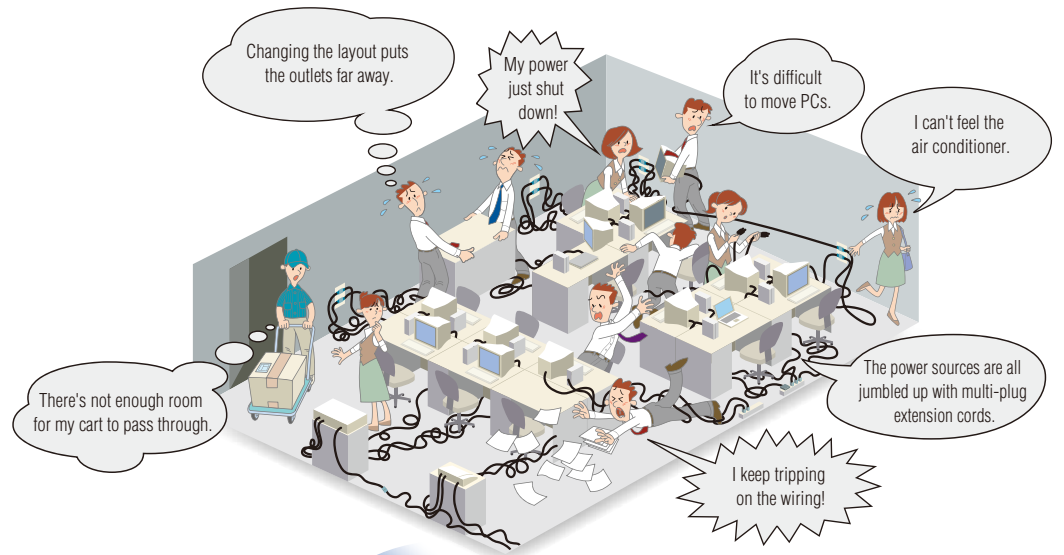
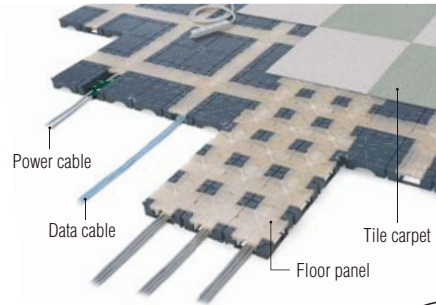
PT. Panasonic Gobel Eco Solutions Sales Indonesia
Summitmas I, 8th Floor
Jl. Jend Sudirman Kav. 61-62, Jakarta 12190
Tel. (021) 252-1616 FAX. (021) 252-1686

<http://panasonic.net/es/id/>

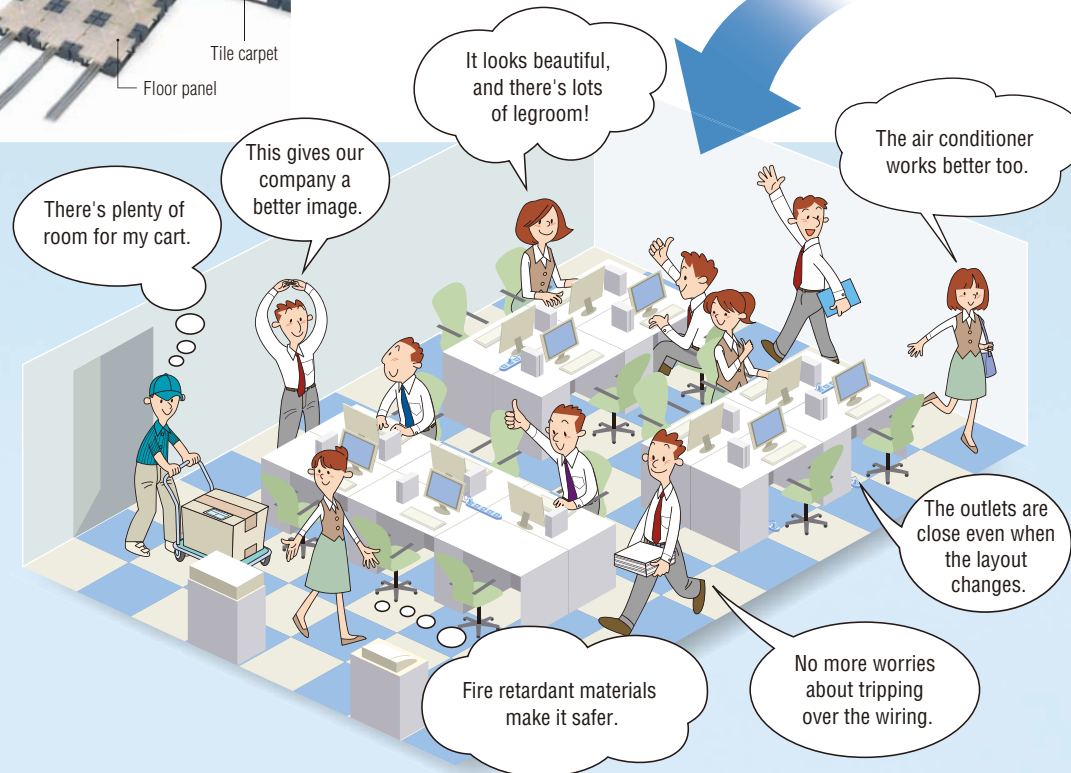
OK!JIKI

solves various wiring problems to provide safe, comfortable office spaces.

The OKIJKI system lays floor panels to create a 2-layer floor structure, and places power cables, LAN cables, and other data cables into the space between the original floor and the floor panels. There is no more need to sink channels into the floor or install wiring ducts.

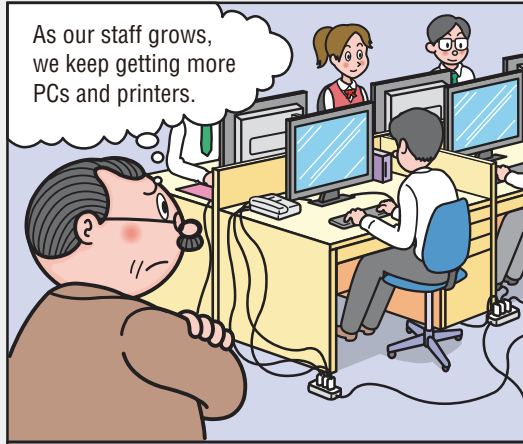


OK!JIKI 3 Major Benefits



Problems Solved! 5 Main Points

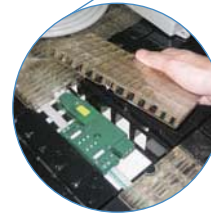
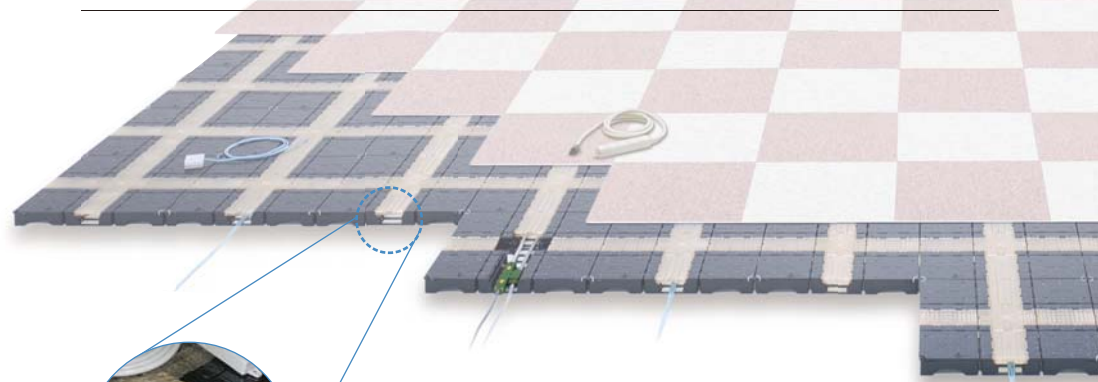
| | | |
|--|----|-------------------|
| Neat, Clean Sub-Floor Wiring | 03 | Safety & Security |
| Fire, Earthquake Countermeasures | 05 | |
| Cooling, Ecology | 07 | Energy-Savings |
| Easy Power Supply Addition, Layout Changes | 09 | Easy Maintenance |
| Lease Pack | 11 | |



Leave it up to me!



Store troublesome wiring **under the floor** to clear up the walking area!

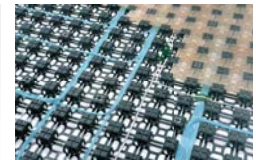


Just open the lid and insert the wiring.

OKIJIKI provides a large storage area while raising the floor only 5 cm. There's no need to bury wiring in floor ducts.



The floor height only rises 5 cm. (Not including the tile carpet)



A large amount of wiring can be stored.

Simply lay it down and insert wiring. The transparent cover makes the wiring visible. Choose from two floor panel types to suit the wiring amount.



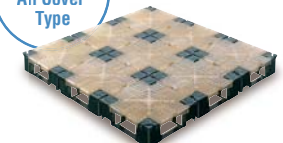
Semi-Transparent Trench Cover Type

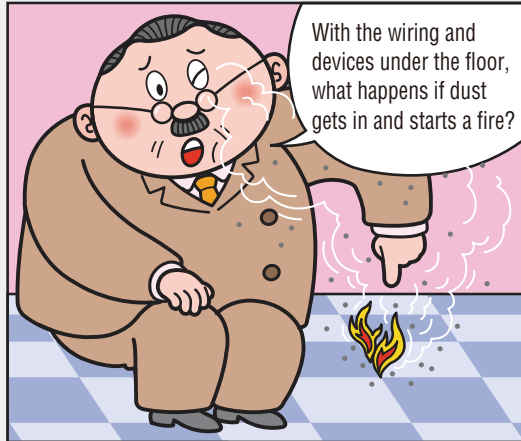
Cables can be stored in the cross-shaped parts.



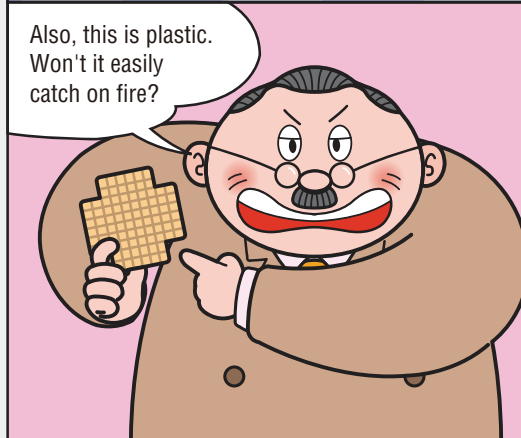
Semi-Transparent All Cover Type

Cables can be stored in all parts.

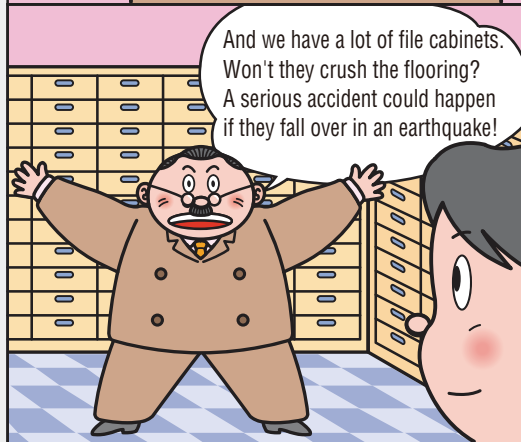




With the wiring and devices under the floor, what happens if dust gets in and starts a fire?

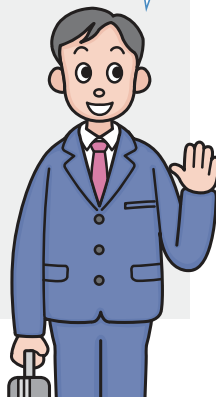


Also, this is plastic. Won't it easily catch on fire?



And we have a lot of file cabinets. Won't they crush the flooring? A serious accident could happen if they fall over in an earthquake!

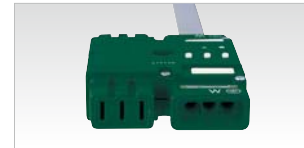
There's no need to worry.



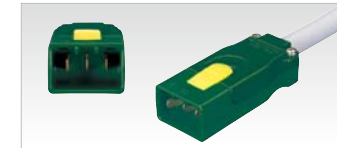
OKIJKI has self-extinguishing and earthquake resistance properties in the event of an accident or disaster.

Reduced fire risk!

The safe and secure harness system eliminates worries about dust entering and starting a fire. Even if a fire occurred, the self-extinguishing property would reduce the risk of it spreading.



The safe and secure harness system repels dust from conductive parts.

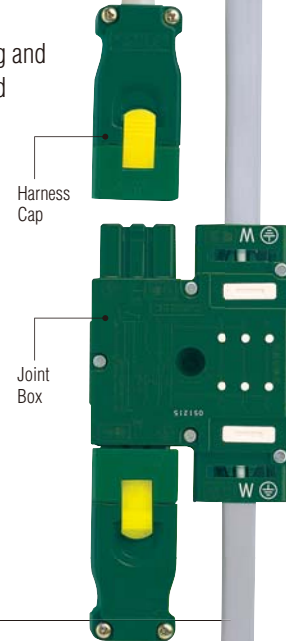


Urea resin is used for conductive parts to resist melting in the event of abnormal heat.



Even if the wiring were to catch fire...

Once the origin of the fire is extinguished, there is no worry about it spreading.



Strong earthquake resistance!

In addition to an earthquake-resistant connection ring, the panels have a highly reliable design that withstands a load of 300 kg. Even if heavy items fell onto them during an earthquake, there is almost no concern about them breaking.



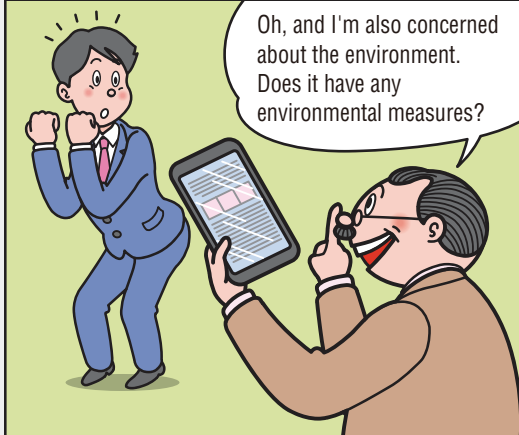
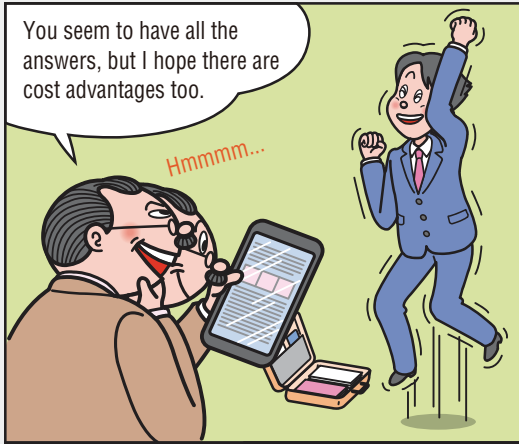
Earthquake-resistant connection rings prevent the panels from shifting.



Earthquake-Resistance Test [200 kg (1G)]

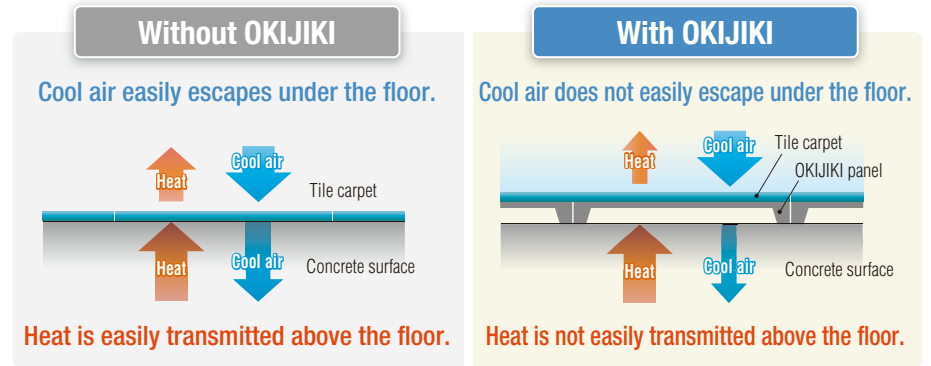


300-kg Load Resistance



Costs are reduced by energy-savings!

The floor's cooling and thermal insulation effect is increased, making the air conditioning more efficient.



A totally recyclable environmental material is used.



Also, these costs are reduced when changing the layout or moving the office.



No electrical construction needed

No costs for moving or adding power supplies.



Reduced cleaning costs

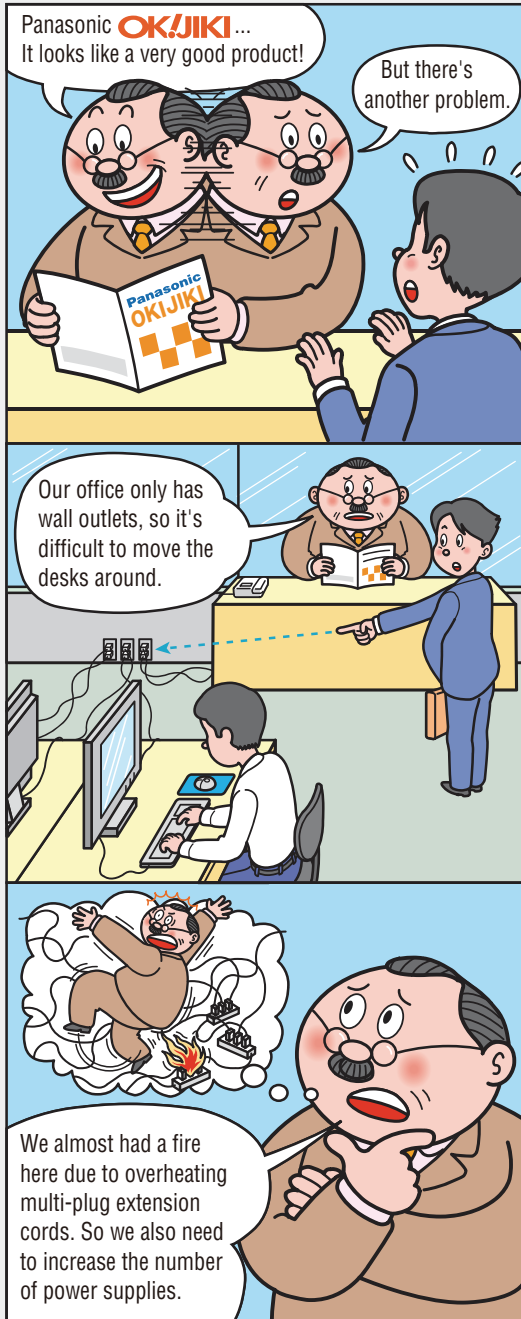
No need for wiring ducts or tapes that require cleaning.



Reduced moving costs

Panels are simply laid in place, so moving and removal are easy.





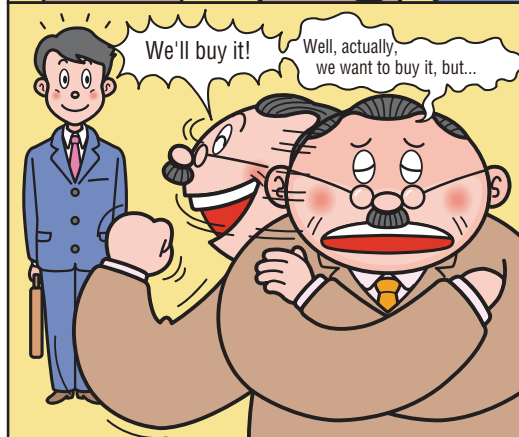
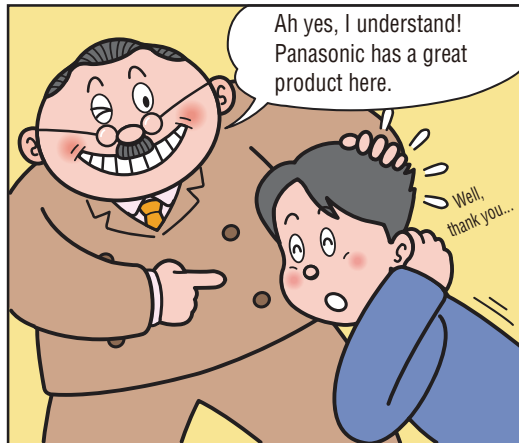
EASY WIRING makes it easy to **add power supplies** and **change the office layout!**

Increasing power supplies is easy, with less work and less wiring.

| Without OKIJKI | With OKIJKI |
|--|--|
| | |
| <p>A contractor must be called and extensive wiring work must be done.</p> | <p>Simply move the harness OA tap to the previously installed joint box.</p> |

Power supplies can also be quickly made when changing the layout.

| Without OKIJKI | With OKIJKI |
|--|---|
| | |
| <p>A contractor must be called to change the position of the outlet.</p> | <p>Outlets can be added in a very short time.</p> <p>Simply open the OKIJKI lid on the floor, and change the OA tap yourself.</p> |



A Lease Pack system is available.

No Financing Necessary

Only a small monthly lease charge is needed.

The newest OKIJIKI floor system can be installed with a simple procedure and a small budget. There's no need to worry even if there are cash or budget restrictions.

Tax-Saving Measure

Lease charges can be wholly included as expenses.

This helps to reduce taxable income and lower the corporate tax burden.

Reassuring Routine Inspections (Optional)

Maintenance is essential for today's offices, considering the number and variety of OA equipment typically installed.

With Lease Pack, the installer visits on a regular basis to inspect for damage or other problems. If the damage or problem cannot be corrected during the visit, a separate price estimate will be issued for quick, off-site repair.

Introducing Lease Pack for convenient financing.



OKIJIKI Lease Pack



Q How long is the lease term?

A Either three or five years can be selected. Setting the lease term to a shorter period than the depreciable life for tax purposes has the same effect as an early depreciation.

Q What happens after the lease term ends?

A The system is handed over to your company after the lease term ends.

Q Can the lease be cancelled midway?

A No, the lease contract cannot be cancelled midway. If it is necessary to cancel midway, the remaining lease amount will have to be paid in a lump sum.

Q What if the leased item is damaged?

A Basically, it will be subject to your insurance policy. For details, please ask your insurance company.



* Designed carpet sample

Customers ordering 100 m² or more of Panasonic OKIJIKI receive a free carpet in a design of your choice.

30
Colours in All
Choose the most suitable colour.

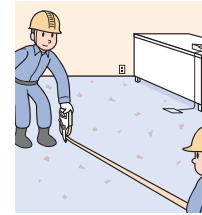
Carpet: Produced by Kawashima Selkon Textiles Co., Ltd. (Size: 50 cm x 150 cm)



The flow from the initial inquiry to hand over



When contacted, an OKIJIKI floor system specialist will visit with a catalogue. Please select the most suitable floor type for the office.



An installer will visit, measure the actual rooms, and confirm the power supply locations and other details.



After confirming the installation range with blueprints or other data, a price estimation will be provided.



The Lease Pack system can be used for the OKIJIKI floor system. In this case, a lease contract will be signed.

Installation

OKIJIKI has been designed to simply fit in place.

The installation process can be completed in 1-2 days* and can be handled during weekends, so the office doesn't even need to close down. OKIJIKI will turn your office into a beautiful environment instantly.

*For an area of about 100 m², using steps ② to ④.



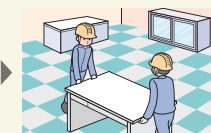
① Moving Desks and Furnishings



② Laying OKIJIKI Floor Panels



③ Storing Cables



④ Replacing Desks and Furnishings

Finished

